

QUERÉTARO

## ---RED FEDERAL LIBRE---

1 Ent. Buenavista - San Miguel de Allende	MEX-057
2 Jalpan de Serra - Rioverde	MEX-069
3 La Noria - Acámbaro	MEX-120
4 Portezuelo - Palmillas	MEX-045
5 Querétaro - Irapuato (Libre)	MEX-045
6 Querétaro - San Luis Potosí	MEX-057
7 San Juan del Río - Xilitla	MEX-120

## ---RED FEDERAL DE CUOTA---

8 Libramiento Nororiental de Querétaro (Cuota)	MEX-057D
9 Palmillas - Apaseo el Grande (Cuota)	MEX-045D
10 Querétaro - Irapuato (Cuota)	MEX-045D

## ---RED FEDERAL INTEGRADA POR TRAMOS LIBRES Y DE CUOTA---

11 México - Querétaro (Cuota)	MEX-057-MEX-057D
-------------------------------	------------------

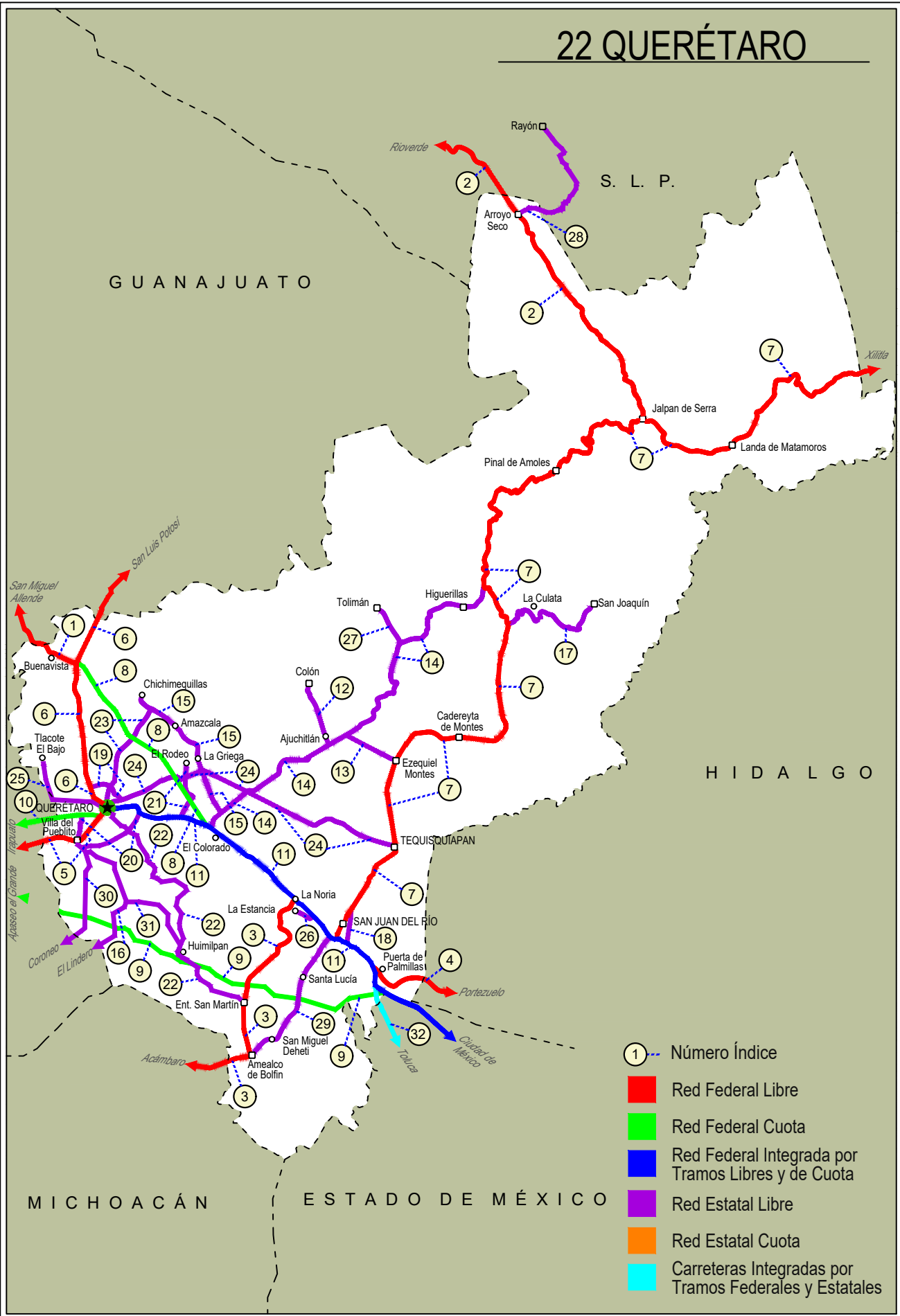
## ---RED ESTATAL LIBRE---

12 Ajuchitlán - Colón	QRO-005
13 Ajuchitlán - Ezequiel Montes	QRO-005
14 El Colorado - Higuerrillas	QRO-004
15 Hacienda Paraíso - Chichimequillas	QRO-001
16 Huimilpan - El Lindero	QRO-GTO
17 La Culata - San Joaquín	QRO-021
18 Libramiento de San Juan del Río	QRO
19 Libramiento Norte de Querétaro	QRO
20 Libramiento Surponiente de Querétaro	QRO
21 Peña Colorada - El Rodeo	QRO
22 Querétaro - Ent. San Martín	QRO
23 Querétaro - Estación Chichimequillas	QRO
24 Querétaro - Tequisquiapan	QRO
25 Querétaro - Tlacote El Bajo	QRO
26 Ramal a La Estancia	QRO
27 Ramal a Tolimán	QRO
28 Rayón - Arroyo Seco	SLP-011
29 San Juan del Río - Amealco	QRO
30 T. C. (Villa del Pueblito - Huimilpan) - La Sabanilla	QRO-GTO
31 Villa del Pueblito - Huimilpan	QRO

## ---CARRETERAS INTEGRADAS POR TRAMOS FEDERALES Y ESTATALES---

32 Toluca - Palmillas	EM(D)-MEX-055
-----------------------	---------------

# 22 QUERÉTARO



- ① Número Índice
- Red Federal Libre
- Red Federal Cuota
- Red Federal Integrada por Tramos Libres y de Cuota
- Red Estatal Libre
- Red Estatal Cuota
- Carreteras Integradas por Tramos Federales y Estatales



QUERÉTARO

1 CARR: Ent. Buenavista - San Miguel de Allende

CLAVE: 00111

RUTA: MEX-057

AÑO: 2025

LUGAR	ESTACION				CLASIFICACION VEHICULAR EN PORCIENTO										COORDENADAS					
	KM	TE	SC	TDPA	M	A	B	C2	C3	T3S2	T3S3	T3S2R4	OTROS	A	B	C	K'	D	LATITUD	LONGITUD
T. C. Querétaro - San Luis Potosí	0.00	3	0	26669	3.3	86.5	1.2	5.6	1.0	1.5	0.3	0.4	0.2	89.8	1.2	9.0	0.080	0.509	20.824404	-100.462548
Lim. Edos. Term. Oro. Ppia. Gto.	7.91																			
T. Izq. Guadalupe	12.00	1	0	12307	1.4	84.5	1.9	7.5	1.4	2.4	0.6	0.3	0.0	85.9	1.9	12.2	0.077	0.609	20.882746	-100.572709
San Miguel de Allende	35.11	1	0	20861	3.3	86.5	1.5	5.4	1.4	0.8	0.6	0.3	0.2	89.8	1.5	8.7	0.078	0.523	20.902449	-100.709903

2 CARR: Jalpan de Serra - Rioverde

CLAVE: 00265

RUTA: MEX-069

AÑO: 2025

LUGAR	ESTACION				CLASIFICACION VEHICULAR EN PORCIENTO										COORDENADAS					
	KM	TE	SC	TDPA	M	A	B	C2	C3	T3S2	T3S3	T3S2R4	OTROS	A	B	C	K'	D	LATITUD	LONGITUD
Jalpan de Serra	0.00	3	0	6847	2.7	91.5	1.0	2.8	0.8	0.5	0.3	0.3	0.1	94.2	1.0	4.8	0.091	0.533	21.239589	-99.482459
T. Izq. Conca	35.01	1	0	2960	5.1	89.3	0.9	2.7	0.9	0.5	0.2	0.3	0.1	94.4	0.9	4.7	0.107	0.516	21.449691	-99.631159
Arroyo Seco	48.60	1	0	2009	3.7	88.6	1.3	4.7	0.7	0.5	0.3	0.2	0.0	92.3	1.3	6.4	0.090	0.507	21.541241	-99.687527
Lim. Edos. Term. Oro. Ppia. S. L. P.	52.27																			
San Ciro de Acosta	69.42	1	0	2616	14.2	71.5	0.6	11.6	0.9	0.6	0.4	0.2	0.0	85.7	0.6	13.7	0.085	0.516	21.648052	-99.808512
San Ciro de Acosta	69.42	3	0	3459	5.2	78.2	1.6	11.5	1.3	1.5	0.3	0.2	0.2	83.4	1.6	15.0	0.095	0.508	21.667177	-99.831591
Rioverde	105.43	1	0	9249	3.9	77.5	0.7	13.0	0.7	2.4	0.9	0.6	0.3	81.4	0.7	17.9	0.083	0.565	21.872792	-99.972824

3 CARR: La Noria - Acámbaro

CLAVE: 00131

RUTA: MEX-120

AÑO: 2025

LUGAR	ESTACION				CLASIFICACION VEHICULAR EN PORCIENTO										COORDENADAS					
	KM	TE	SC	TDPA	M	A	B	C2	C3	T3S2	T3S3	T3S2R4	OTROS	A	B	C	K'	D	LATITUD	LONGITUD
La Noria	0.00	3	0	11535	2.1	85.4	2.0	5.7	1.9	1.0	0.6	0.9	0.4	87.5	2.0	10.5	0.098	0.529	20.437973	-100.074498
Amealco	34.66	1	0	6402	2.7	87.0	2.8	4.6	1.1	0.8	0.6	0.3	0.1	89.7	2.8	7.5	0.103	0.509	20.199623	-100.150068
Amealco	34.66	3	0	6193	3.5	90.4	1.4	2.9	0.8	0.5	0.4	0.1	0.0	93.9	1.4	4.7	0.139	0.502	20.186530	-100.158807
Lim. Edos. Term. Oro. Ppia. Mich.	39.15																			
Lim. Edos. Term. Mich. Ppia. Gto.	55.90																			
Coroneo	59.35	3	0	2097	2.8	85.1	3.8	4.5	1.5	1.7	0.4	0.2	0.0	87.9	3.8	8.3	0.092	0.503	20.194939	-100.376000
Jerécuaro	79.70	3	0	2606	3.5	83.5	3.6	3.0	4.6	1.0	0.5	0.2	0.1	87.0	3.6	9.4	0.089	0.579	20.144142	-100.539012
Acámbaro	111.12	1	0	6840	4.9	84.8	1.5	4.6	2.1	1.1	0.7	0.3	0.0	89.7	1.5	8.8	0.085	0.554	20.052049	-100.697033

4 CARR: Portezuelo - Palmillas

CLAVE: 00194

RUTA: MEX-045

AÑO: 2025

LUGAR	ESTACION				CLASIFICACION VEHICULAR EN PORCIENTO										COORDENADAS					
	KM	TE	SC	TDPA	M	A	B	C2	C3	T3S2	T3S3	T3S2R4	OTROS	A	B	C	K'	D	LATITUD	LONGITUD
Portezuelo	0.00	3	1	5111	3.1	72.0	3.3	8.8	2.3	5.9	2.6	1.6	0.4	75.1	3.3	21.6	0.089	0.506	20.486612	-99.304318

QUERÉTARO

4 CARR: Portezuelo - Palmillas

CLAVE: 00194

RUTA: MEX-045

AÑO: 2025

LUGAR	ESTACION				CLASIFICACION VEHICULAR EN PORCIENTO										COORDENADAS					
	KM	TE	SC	TDPA	M	A	B	C2	C3	T3S2	T3S3	T3S2R4	OTROS	A	B	C	K'	D	LATITUD	LONGITUD
Portezuelo	0.00	3	2	5228	2.8	72.8	3.1	8.7	2.1	5.6	3.0	1.5	0.4	75.6	3.1	21.3	0.084	0.506	20.486513	-99.304319
Jonacapa	29.41	3	0	6332	4.2	74.3	2.7	7.2	2.8	4.3	2.9	1.3	0.3	78.5	2.7	18.8	0.091	0.507	20.435417	-99.536445
Huichapan	45.10	1	1	4450	2.1	76.7	3.4	6.0	2.5	3.7	2.6	2.4	0.6	78.8	3.4	17.8	0.108	0.504	20.395475	-99.635310
Huichapan	45.10	1	2	4526	1.9	77.8	3.0	5.7	2.3	4.0	2.3	2.3	0.7	79.7	3.0	17.3	0.082	0.504	20.395407	-99.635239
T. Izq. Nopala	56.15	1	0	10041	3.0	78.1	3.0	4.8	1.8	5.0	2.0	1.8	0.5	81.1	3.0	15.9	0.095	0.501	20.318670	-99.712683
T. Izq. Nopala	56.15	3	0	8617	2.9	73.3	3.2	5.7	2.4	5.6	3.7	2.4	0.8	76.2	3.2	20.6	0.083	0.508	20.309674	-99.721409
Lim. Edos. Term. Hgo. Ppia. Oro.	71.40																			
Palmillas	80.00	1	1	5833	2.1	74.9	2.3	9.0	2.0	3.6	3.3	2.0	0.8	77.0	2.3	20.7	0.074	0.506	20.322258	-99.928747
Palmillas	80.00	1	2	5966	1.8	74.9	2.5	9.1	2.2	3.6	3.3	2.0	0.6	76.7	2.5	20.8	0.078	0.506	20.322213	-99.928819

5 CARR: Querétaro - Irapuato (Libre)

CLAVE: 00154

RUTA: MEX-045

AÑO: 2025

LUGAR	ESTACION				CLASIFICACION VEHICULAR EN PORCIENTO										COORDENADAS					
	KM	TE	SC	TDPA	M	A	B	C2	C3	T3S2	T3S3	T3S2R4	OTROS	A	B	C	K'	D	LATITUD	LONGITUD
Querétaro Poniente	0.00	3	1	85428	3.6	82.1	0.5	5.3	0.8	3.8	2.3	0.9	0.7	85.7	0.5	13.8	0.077	0.509	20.554029	-100.421277
Querétaro Poniente	0.00	3	2	89061	4.0	82.5	0.7	5.1	0.5	3.8	2.1	0.7	0.6	86.5	0.7	12.8	0.074	0.509	20.553945	-100.421153
T. Der. Villa del Pueblito	6.67	3	1	28707	2.8	83.6	0.5	4.6	0.8	4.2	2.4	0.4	0.7	86.4	0.5	13.1	0.078	0.510	20.533885	-100.450004
T. Der. Villa del Pueblito	6.67	3	2	29989	3.1	84.1	0.5	4.9	0.5	3.8	2.2	0.3	0.6	87.2	0.5	12.3	0.090	0.510	20.533831	-100.450190
Los Ángeles	12.60	3	1	26580	3.7	80.4	2.1	6.6	1.3	3.6	1.6	0.3	0.4	84.1	2.1	13.8	0.078	0.504	20.532917	-100.503436
Los Ángeles	12.60	3	2	26196	3.5	81.3	1.8	6.1	1.2	3.2	1.8	0.6	0.5	84.8	1.8	13.4	0.075	0.504	20.533687	-100.500369
Lim. Edos. Term. Oro. Ppia. Gto.	13.49																			
T. C. Palmillas - Apaseo el Grande (Cuota)	23.50	1	1	14352	1.2	76.1	1.5	7.8	3.4	7.5	1.7	0.6	0.2	77.3	1.5	21.2	0.077	0.509	20.504599	-100.581647
T. C. Palmillas - Apaseo el Grande (Cuota)	23.50	1	2	14541	1.1	76.4	1.8	7.6	3.3	7.3	1.6	0.7	0.2	77.5	1.8	20.7	0.074	0.509	20.504509	-100.581626
T. C. Palmillas - Apaseo el Grande (Cuota)	23.50	3	1	14878	1.2	73.9	2.4	9.8	3.5	7.6	0.9	0.5	0.2	75.1	2.4	22.5	0.074	0.521	20.487955	-100.601280
T. C. Palmillas - Apaseo el Grande (Cuota)	23.50	3	2	14229	1.0	73.3	2.5	10.3	3.2	7.8	1.1	0.7	0.1	74.3	2.5	23.2	0.079	0.521	20.487790	-100.601267
T. Izq. Apaseo El Alto	28.37	3	1	16644	1.5	75.7	2.6	7.6	3.0	7.5	1.4	0.6	0.1	77.2	2.6	20.2	0.068	0.539	20.471458	-100.639609
T. Izq. Apaseo El Alto	28.37	3	2	16765	1.9	76.7	2.3	7.3	2.8	7.0	1.2	0.5	0.3	78.6	2.3	19.1	0.074	0.539	20.471491	-100.639772
T. Der. Apaseo El Grande	40.11	3	1	21433	1.8	74.0	2.2	7.7	3.4	7.5	2.5	0.6	0.3	75.8	2.2	22.0	0.070	0.512	20.531276	-100.718664
T. Der. Apaseo El Grande	40.11	3	2	21942	1.9	74.0	2.2	7.7	3.4	7.6	2.5	0.5	0.2	75.9	2.2	21.9	0.071	0.512	20.531167	-100.718721
T. Izq. Libramiento de Celaya Ote.	49.90	1	1	20487	2.3	73.8	4.8	7.7	2.6	5.8	2.4	0.4	0.2	76.1	4.8	19.1	0.074	0.625	20.521382	-100.749783
T. Izq. Libramiento de Celaya Ote.	49.90	1	2	22629	2.1	73.6	4.9	7.8	2.6	5.9	2.5	0.5	0.1	75.7	4.9	19.4	0.084	0.625	20.521477	-100.749180
T. Izq. Libramiento de Celaya Pte.	55.61	3	1	29431	1.4	78.7	3.0	8.3	2.7	4.1	1.1	0.6	0.1	80.1	3.0	16.9	0.074	0.517	20.516068	-100.885453
T. Izq. Libramiento de Celaya Pte.	55.61	3	2	30824	1.5	78.5	3.1	8.2	3.0	3.7	1.0	0.8	0.2	80.0	3.1	16.9	0.070	0.517	20.515874	-100.886948
T. Izq. Cortazar	67.50	3	1	23686	5.4	76.0	3.2	8.4	2.3	3.2	0.9	0.5	0.1	81.4	3.2	15.4	0.077	0.537	20.509936	-100.971547
T. Izq. Cortazar	67.50	3	2	24370	5.3	76.0	3.4	8.2	2.5	3.3	0.8	0.4	0.1	81.3	3.4	15.3	0.064	0.537	20.510043	-100.968786

QUERÉTARO

5 CARR: Querétaro - Irapuato (Libre)

CLAVE: 00154

RUTA: MEX-045

AÑO: 2025

LUGAR	ESTACION				CLASIFICACION VEHICULAR EN PORCIENTO										COORDENADAS					
	KM	TE	SC	TDPA	M	A	B	C2	C3	T3S2	T3S3	T3S2R4	OTROS	A	B	C	K'	D	LATITUD	LONGITUD
T. Izq. Libramiento de Salamanca Este	93.80	1	1	21703	3.9	65.0	7.2	12.0	2.6	6.1	2.0	0.9	0.3	68.9	7.2	23.9	0.072	0.518	20.553042	-101.150417
T. Izq. Libramiento de Salamanca Este	93.80	1	2	21647	4.1	65.1	7.3	12.2	2.4	6.0	1.9	0.8	0.2	69.2	7.3	23.5	0.067	0.518	20.552969	-101.150464
T. Izq. Libramiento de Salamanca Oeste	102.10																			
Irapuato	113.70	1	1	12847	4.5	79.6	3.0	6.7	3.0	1.8	0.9	0.4	0.1	84.1	3.0	12.9	0.083	0.557	20.657645	-101.302601
Irapuato	113.70	1	2	14016	5.1	79.2	2.8	6.5	3.1	1.9	0.9	0.4	0.1	84.3	2.8	12.9	0.075	0.557	20.657616	-101.302726

6 CARR: Querétaro - San Luis Potosi

CLAVE: 00165

RUTA: MEX-057

AÑO: 2025

LUGAR	ESTACION				CLASIFICACION VEHICULAR EN PORCIENTO										COORDENADAS					
	KM	TE	SC	TDPA	M	A	B	C2	C3	T3S2	T3S3	T3S2R4	OTROS	A	B	C	K'	D	LATITUD	LONGITUD
Querétaro	0.00																			
T. Der. Libramiento de Querétaro Lateral	6.28	3	1	29295	6.3	84.1	1.0	5.2	1.2	1.2	0.3	0.5	0.2	90.4	1.0	8.6	0.082	0.517	20.631740	-100.426340
T. Der. Libramiento de Querétaro Central	6.28	3	1	55410	2.9	88.1	0.8	4.5	0.9	2.0	0.4	0.3	0.1	91.0	0.8	8.2	0.098	0.507	20.636673	-100.428763
T. Der. Libramiento de Querétaro Central	6.28	3	2	53734	2.7	88.3	0.7	4.7	0.8	2.1	0.4	0.2	0.1	91.0	0.7	8.3	0.075	0.507	20.636679	-100.428899
T. Der. Libramiento de Querétaro Lateral	6.28	3	2	25860	6.6	83.2	1.2	5.4	1.4	1.3	0.2	0.4	0.3	89.8	1.2	9.0	0.078	0.517	20.637128	-100.429261
T. C. Anillo Vial Fray Junípero Serra (Centrales)	14.00	1	1	34623	2.3	85.0	1.7	7.5	0.9	1.9	0.3	0.3	0.1	87.3	1.7	11.0	0.090	0.533	20.689383	-100.435676
T. C. Anillo Vial Fray Junípero Serra (Laterales)	14.00	1	1	35147	2.8	92.4	0.8	2.9	0.4	0.3	0.1	0.2	0.1	95.2	0.8	4.0	0.096	0.535	20.688549	-100.435409
T. C. Anillo Vial Fray Junípero Serra (Laterales)	14.00	1	2	41015	2.7	92.0	1.1	2.6	0.6	0.5	0.1	0.3	0.1	94.7	1.1	4.2	0.082	0.535	20.688024	-100.435840
T. C. Anillo Vial Fray Junípero Serra (Centrales)	14.00	1	2	29954	2.5	84.9	1.8	7.2	0.7	1.9	0.6	0.3	0.1	87.4	1.8	10.8	0.094	0.533	20.689432	-100.435836
T. Izq. Juriquilla	15.63	3	1	45744	0.9	88.1	1.2	6.2	0.9	1.6	0.5	0.4	0.2	89.0	1.2	9.8	0.100	0.507	20.718891	-100.438871
T. Izq. Juriquilla	15.63	3	2	44352	0.8	88.3	1.2	6.5	1.0	1.4	0.4	0.3	0.1	89.1	1.2	9.7	0.102	0.507	20.716169	-100.438703
T. Izq. San Miguel de Allende	28.53	1	1	38180	1.1	80.8	1.4	8.9	1.6	4.3	0.9	0.7	0.3	81.9	1.4	16.7	0.130	0.505	20.802976	-100.448738
T. Izq. San Miguel de Allende	28.53	1	2	37427	1.2	80.1	1.6	9.1	1.6	4.1	1.1	0.9	0.3	81.3	1.6	17.1	0.093	0.505	20.803002	-100.448912
T. Izq. San Miguel de Allende	28.53	3	1	26272	1.6	57.8	3.4	8.8	3.2	18.1	2.5	3.8	0.8	59.4	3.4	37.2	0.062	0.513	20.836009	-100.439762
T. Izq. San Miguel de Allende	28.53	3	2	29340	1.4	58.0	3.3	8.6	3.2	18.3	2.6	3.9	0.7	59.4	3.3	37.3	0.057	0.513	20.839028	-100.438412
Lim. Edos. Term. Oro. Ppia. Gto.	36.70																			
X. C. San José Iturbide - El Arenal	46.83	1	1	24146	4.9	59.6	4.2	7.7	3.2	17.0	1.4	1.8	0.2	64.5	4.2	31.3	0.074	0.554	20.969356	-100.429401
X. C. San José Iturbide - El Arenal	46.83	1	2	22954	4.6	59.4	4.0	7.9	3.5	16.9	1.6	1.7	0.4	64.0	4.0	32.0	0.070	0.554	20.969229	-100.429537
X. C. San José Iturbide - El Arenal	46.83	3	1	17714	5.2	50.9	6.9	6.3	3.1	21.3	2.7	3.2	0.4	56.1	6.9	37.0	0.063	0.560	20.983984	-100.434982
X. C. San José Iturbide - El Arenal	46.83	3	2	19157	5.0	51.5	6.6	6.3	3.3	21.0	2.8	3.0	0.5	56.5	6.6	36.9	0.068	0.560	20.983926	-100.435147
X. C. Ent. San Miguel de Allende - Dr. Mora	61.93	1	1	16193	2.9	52.5	5.3	5.1	4.0	22.9	3.4	3.2	0.7	55.4	5.3	39.3	0.075	0.511	21.077062	-100.512504
X. C. Ent. San Miguel de Allende - Dr. Mora	61.93	1	2	16552	3.0	52.3	5.4	5.2	3.9	23.0	3.5	3.1	0.6	55.3	5.4	39.3	0.072	0.511	21.076846	-100.512504
X. C. San Luis de La Paz - Guanajuato	86.68	1	1	17069	3.8	42.8	7.0	6.2	3.2	28.9	4.2	3.2	0.7	46.6	7.0	46.4	0.073	0.530	21.256295	-100.586619
X. C. San Luis de La Paz - Guanajuato	86.68	1	2	17416	3.9	43.5	6.9	6.0	3.0	29.2	4.0	2.9	0.6	47.4	6.9	45.7	0.070	0.530	21.256450	-100.586824
T. Izq. San Diego de La Unión	119.07	1	1	11074	3.7	32.8	7.7	8.8	4.0	34.1	3.7	4.3	0.9	36.5	7.7	55.8	0.065	0.558	21.528290	-100.740190

QUERÉTARO

6 CARR: Querétaro - San Luis Potosí

CLAVE: 00165

RUTA: MEX-057

AÑO: 2025

LUGAR	ESTACION				CLASIFICACION VEHICULAR EN PORCIENTO										COORDENADAS					
	KM	TE	SC	TDPA	M	A	B	C2	C3	T3S2	T3S3	T3S2R4	OTROS	A	B	C	K'	D	LATITUD	LONGITUD
T. Izq. San Diego de La Unión	119.07	1	2	11709	3.6	32.8	7.8	8.7	4.1	34.2	3.6	4.4	0.8	36.4	7.8	55.8	0.071	0.558	21.528210	-100.740350
T. Izq. San Diego de La Unión	119.07	3	1	12448	2.9	39.1	7.3	9.1	4.0	31.0	3.0	2.8	0.8	42.0	7.3	50.7	0.057	0.536	21.544841	-100.749394
T. Izq. San Diego de La Unión	119.07	3	2	11848	2.8	40.8	7.2	8.9	3.9	29.5	3.1	2.9	0.9	43.6	7.2	49.2	0.067	0.536	21.544758	-100.749551
Lim. Edos. Term. Gto. Ppia. S. L. P.	124.74																			
T. Der. Tierra Nueva	140.65	1	1	12643	7.4	45.4	5.4	6.1	2.5	25.2	2.9	4.1	1.0	52.8	5.4	41.8	0.072	0.519	21.685079	-100.694225
T. Der. Tierra Nueva	140.65	1	2	12774	7.5	46.7	5.5	6.1	2.4	23.5	3.1	4.5	0.7	54.2	5.5	40.3	0.070	0.519	21.685299	-100.694264
T. Der. Tierra Nueva	140.65	3	1	14640	8.0	48.8	5.1	6.0	2.4	22.2	2.8	3.8	0.9	56.8	5.1	38.1	0.075	0.566	21.710883	-100.686893
T. Der. Tierra Nueva	140.65	3	2	15183	7.8	50.0	4.9	5.9	2.2	22.0	2.7	3.6	0.9	57.8	4.9	37.3	0.068	0.566	21.704634	-100.684703
T. Izq. Santa María del Río	155.88	3	1	15843	8.2	52.2	5.5	4.8	2.3	20.0	2.0	4.2	0.8	60.4	5.5	34.1	0.073	0.598	21.846280	-100.741783
T. Izq. Santa María del Río	155.88	3	2	15640	8.1	52.2	5.3	4.9	2.2	20.2	1.9	4.4	0.8	60.3	5.3	34.4	0.069	0.598	21.846164	-100.741924
T. Izq. Villa de Reyes	176.35	1	1	16192	9.0	49.4	4.8	5.0	3.4	20.2	2.6	4.7	0.9	58.4	4.8	36.8	0.065	0.545	21.958714	-100.810328
T. Izq. Villa de Reyes	176.35	1	2	14991	8.8	48.5	5.0	5.3	3.6	20.5	2.7	4.5	1.1	57.3	5.0	37.7	0.070	0.545	21.960313	-100.811394
T. Izq. Villa de Reyes	176.35	3	1	22515	3.6	57.3	4.3	7.2	2.3	19.0	2.4	3.1	0.8	60.9	4.3	34.8	0.081	0.628	21.986053	-100.825155
T. Izq. Villa de Reyes	176.35	3	2	23142	3.7	56.7	4.5	7.1	2.4	19.2	2.5	3.2	0.7	60.4	4.5	35.1	0.063	0.628	21.986092	-100.825367
T. Izq. Villa de Arriaga (Cuota)	182.60	1	1	32864	2.4	66.0	5.3	4.2	2.2	15.0	1.7	2.5	0.7	68.4	5.3	26.3	0.064	0.578	22.014208	-100.840434
T. Izq. Villa de Arriaga (Cuota)	182.60	1	2	31728	2.3	66.0	5.4	4.3	2.3	15.1	1.6	2.4	0.6	68.3	5.4	26.3	0.078	0.578	22.011793	-100.839323
X. C. Libramiento de San Luis Potosí	184.80	1	1	34775	2.1	61.0	4.5	7.7	1.7	18.9	1.5	2.0	0.6	63.1	4.5	32.4	0.087	0.573	22.026121	-100.846897
X. C. Libramiento de San Luis Potosí	184.80	1	2	33996	2.2	60.6	4.4	7.8	1.8	19.0	1.4	2.1	0.7	62.8	4.4	32.8	0.097	0.573	22.025890	-100.846990
X. Periférico de San Luis Potosí (Central)	197.50	1	1	66479	4.2	88.8	1.0	2.9	0.5	0.7	0.4	1.1	0.4	93.0	1.0	6.0	0.065	0.554	22.121802	-100.912748
X. Periférico de San Luis Potosí (Lateral)	197.50	1	1	22746	3.9	80.4	1.3	7.3	2.6	2.3	0.7	1.0	0.5	84.3	1.3	14.4	0.121	0.554	22.121942	-100.912708
X. Periférico de San Luis Potosí (Central)	197.50	1	2	59940	4.4	88.5	1.1	3.0	0.6	0.8	0.3	0.9	0.4	92.9	1.1	6.0	0.074	0.554	22.121671	-100.912882
X. Periférico de San Luis Potosí (Lateral)	197.50	1	2	23639	3.7	79.9	1.4	7.4	2.7	2.4	0.6	1.2	0.7	83.6	1.4	15.0	0.103	0.554	22.121382	-100.913101
San Luis Potosí	201.66																			

7 CARR: San Juan del Río - Xilitla

CLAVE: 00183

RUTA: MEX-120

AÑO: 2025

LUGAR	ESTACION				CLASIFICACION VEHICULAR EN PORCIENTO										COORDENADAS					
	KM	TE	SC	TDPA	M	A	B	C2	C3	T3S2	T3S3	T3S2R4	OTROS	A	B	C	K'	D	LATITUD	LONGITUD
San Juan del Río	0.00																			
T. Der. Libramiento de San Juan del Río	5.20	3	1	18216	2.6	88.3	1.7	3.5	1.5	1.3	0.6	0.3	0.2	90.9	1.7	7.4	0.123	0.508	20.426980	-99.974345
T. Der. Libramiento de San Juan del Río	5.20	3	2	18841	2.7	87.7	1.8	3.6	1.6	1.4	0.7	0.3	0.2	90.4	1.8	7.8	0.125	0.508	20.427045	-99.974448
T. Der. Tequisquiapan	19.80	1	1	13008	3.5	88.5	1.4	3.2	1.6	1.0	0.4	0.3	0.1	92.0	1.4	6.6	0.114	0.531	20.513184	-99.905728
T. Der. Tequisquiapan	19.80	1	2	11467	3.5	87.7	1.5	3.2	1.9	1.1	0.4	0.5	0.2	91.2	1.5	7.3	0.094	0.531	20.513296	-99.905810
T. Der. Tequisquiapan	19.80	3	1	11696	3.2	89.0	1.6	2.7	1.2	1.1	0.7	0.3	0.2	92.2	1.6	6.2	0.093	0.506	20.543488	-99.901972
T. Der. Tequisquiapan	19.80	3	2	11397	3.4	87.8	1.8	3.1	1.4	1.3	0.7	0.3	0.2	91.2	1.8	7.0	0.089	0.506	20.542924	-99.901982

QUERÉTARO

7 CARR: San Juan del Río - Xilitla

CLAVE: 00183

RUTA: MEX-120

AÑO: 2025

LUGAR	ESTACION				CLASIFICACION VEHICULAR EN PORCIENTO										COORDENADAS					
	KM	TE	SC	TDPA	M	A	B	C2	C3	T3S2	T3S3	T3S2R4	OTROS	A	B	C	K'	D	LATITUD	LONGITUD
Ezequiel Montes	36.50	1	1	9032	4.0	81.4	1.9	6.7	2.8	1.9	0.7	0.4	0.2	85.4	1.9	12.7	0.118	0.529	20.639749	-99.907303
Ezequiel Montes	36.50	1	2	8026	3.9	81.7	1.8	6.8	2.6	1.8	0.8	0.4	0.2	85.6	1.8	12.6	0.094	0.529	20.640773	-99.907091
Ezequiel Montes	36.50	3	1	6264	3.7	90.7	0.8	3.0	0.8	0.5	0.3	0.2	0.0	94.4	0.8	4.8	0.095	0.510	20.680922	-99.888351
Ezequiel Montes	36.50	3	2	6523	3.7	90.4	0.8	3.2	0.9	0.5	0.3	0.2	0.0	94.1	0.8	5.1	0.094	0.510	20.681006	-99.888447
Cadereyta	47.90	3	1	5693	3.2	85.1	1.7	3.5	3.0	1.7	1.4	0.4	0.0	88.3	1.7	10.0	0.107	0.514	20.702487	-99.801522
Cadereyta	47.90	3	2	5385	3.2	85.1	1.7	3.4	3.1	1.8	1.2	0.5	0.0	88.3	1.7	10.0	0.098	0.514	20.702554	-99.801586
Vizarrón de Montes	73.50	3	0	3024	2.6	84.9	1.3	4.6	2.8	1.8	1.4	0.5	0.1	87.5	1.3	11.2	0.082	0.503	20.847384	-99.713325
T. Der. San Joaquín	79.50	3	0	1208	2.8	83.6	1.9	9.4	1.4	0.6	0.2	0.1	0.0	86.4	1.9	11.7	0.113	0.520	20.884679	-99.707004
T. Izq. Higuerrillas	89.10	3	0	3260	2.6	89.8	1.6	4.2	1.4	0.4	0.0	0.0	0.0	92.4	1.6	6.0	0.112	0.507	20.951662	-99.748958
T. Izq. Peñamiller	103.00	3	0	2612	3.6	84.3	1.5	8.7	1.4	0.4	0.1	0.0	0.0	87.9	1.5	10.6	0.117	0.518	21.040357	-99.739794
Pinal de Amoles	140.00	3	0	2649	3.4	90.5	0.9	3.0	1.6	0.3	0.1	0.2	0.0	93.9	0.9	5.2	0.101	0.509	21.138951	-99.620101
Jalpan de Serra	179.30	3	0	9872	4.4	91.0	0.5	2.3	0.5	0.5	0.4	0.3	0.1	95.4	0.5	4.1	0.080	0.515	21.209416	-99.454190
Landa de Matamoros	201.60	3	0	3267	2.0	90.9	1.2	3.8	0.9	0.5	0.3	0.3	0.1	92.9	1.2	5.9	0.105	0.515	21.186138	-99.314357
El Lobo	236.40	3	0	1811	4.2	85.4	0.7	7.4	1.4	0.4	0.5	0.0	0.0	89.6	0.7	9.7	0.106	0.511	21.292211	-99.116107
Lim. Edos. Term. Oro. Ppia. S. L. P.	238.33																			
Xilitla	266.40	1	0	3266	7.9	78.1	0.5	8.6	1.8	2.0	0.7	0.3	0.1	86.0	0.5	13.5	0.080	0.538	21.377868	-99.004335
T. C. Portezuelo - Cd. Valles	276.98	1	0	3563	5.7	83.5	1.4	6.0	1.3	1.3	0.4	0.3	0.1	89.2	1.4	9.4	0.092	0.532	21.437267	-98.933495

8 CARR: Libramiento Nororiental de Querétaro (Cuota)

CLAVE: 22266

RUTA: MEX-057D

AÑO: 2025

LUGAR	ESTACION				CLASIFICACION VEHICULAR EN PORCIENTO										COORDENADAS					
	KM	TE	SC	TDPA	M	A	B	C2	C3	T3S2	T3S3	T3S2R4	OTROS	A	B	C	K'	D	LATITUD	LONGITUD
T. C. México - Querétaro	0.00	3	1	11176	4.3	38.4	6.9	7.3	3.1	30.3	3.6	5.4	0.7	42.7	6.9	50.4	0.048	0.508	20.569191	-100.233550
T. C. México - Querétaro	0.00	3	2	11562	3.8	34.4	7.1	7.7	3.5	32.9	4.1	5.8	0.7	38.2	7.1	54.7	0.049	0.508	20.569105	-100.233709
Plaza de Cobro Chichimequillas	20.32	2	1	8911	0.3	38.1	1.3	6.3	5.4	37.9	3.5	6.0	1.2	38.4	1.3	60.3	0.066	0.500	20.705589	-100.343736
Plaza de Cobro Chichimequillas	20.32	2	2	8911	0.3	38.1	1.3	6.3	5.4	37.9	3.5	6.0	1.2	38.4	1.3	60.3	0.066	0.500	20.705589	-100.343736
T. C. Querétaro - San Luis Potosí	37.50	1	1	10683	2.0	47.9	6.7	6.2	2.7	22.9	3.3	7.6	0.7	49.9	6.7	43.4	0.056	0.507	20.804988	-100.435135
T. C. Querétaro - San Luis Potosí	37.50	1	2	11000	1.7	45.9	6.9	6.5	3.1	23.3	3.8	8.0	0.8	47.6	6.9	45.5	0.058	0.507	20.815543	-100.445760

9 CARR: Palmillas - Apaseo el Grande (Cuota)

CLAVE:

RUTA: MEX-045D

AÑO: 2025

LUGAR	ESTACION				CLASIFICACION VEHICULAR EN PORCIENTO										COORDENADAS					
	KM	TE	SC	TDPA	M	A	B	C2	C3	T3S2	T3S3	T3S2R4	OTROS	A	B	C	K'	D	LATITUD	LONGITUD
T. C. México - Querétaro (Cuota)	0.00																			
Ent. Palmillas	1.60	1	1	5901	3.5	57.6	8.5	5.0	3.1	13.8	2.2	5.3	1.0	61.1	8.5	30.4	0.109	0.508	20.292726	-99.928609

QUERÉTARO

9 CARR: Palmillas - Apaseo el Grande (Cuota)

CLAVE:

RUTA: MEX-045D

AÑO: 2025

LUGAR	ESTACION				CLASIFICACION VEHICULAR EN PORCIENTO										COORDENADAS					
	KM	TE	SC	TDPA	M	A	B	C2	C3	T3S2	T3S3	T3S2R4	OTROS	A	B	C	K'	D	LATITUD	LONGITUD
Ent. Palmillas	1.60	1	2	6104	3.3	58.1	8.7	4.8	2.9	13.7	2.4	5.2	0.9	61.4	8.7	29.9	0.104	0.508	20.292642	-99.928441
Ent. Palmillas	1.60	3	1	7944	2.5	57.4	8.7	5.1	3.5	14.1	2.5	5.3	0.9	59.9	8.7	31.4	0.088	0.518	20.292153	-99.937906
Ent. Palmillas	1.60	3	2	7381	2.7	57.7	8.6	5.0	3.3	14.0	2.6	5.3	0.8	60.4	8.6	31.0	0.105	0.518	20.292072	-99.937904
T. Izq. Amealco	15.40	3	1	7979	2.6	57.1	8.6	4.9	4.0	13.9	2.6	5.3	1.0	59.7	8.6	31.7	0.099	0.516	20.281794	-100.065144
T. Izq. Amealco	15.40	3	2	7483	2.5	57.1	8.9	4.7	3.7	13.9	2.8	5.4	1.0	59.6	8.9	31.5	0.088	0.516	20.281711	-100.065153
T. C. (Villa del Pueblito - Huimilpan) - Coroneo	40.60	3	1	7382	2.1	58.0	8.8	5.6	3.9	13.3	2.9	4.6	0.8	60.1	8.8	31.1	0.101	0.513	20.350483	-100.278128
T. C. (Villa del Pueblito - Huimilpan) - Coroneo	40.60	3	2	7763	2.3	56.1	9.2	5.7	4.1	13.6	3.1	4.9	1.0	58.4	9.2	32.4	0.079	0.513	20.350418	-100.278183
Lim. Edos. Term. Oro. Ppia. Gto.	65.40																			
T. C. Querétaro - Irapuato (Libre)	78.80																			
T. C. Querétaro - Irapuato (Cuota)	85.20	1	1	5674	2.5	53.6	11.2	6.4	3.9	15.9	2.7	3.0	0.8	56.1	11.2	32.7	0.063	0.600	20.527845	-100.618096
T. C. Querétaro - Irapuato (Cuota)	85.20	1	2	6284	2.6	53.7	11.1	6.5	3.7	15.8	2.8	3.1	0.7	56.3	11.1	32.6	0.065	0.600	20.526909	-100.617199

10 CARR: Querétaro - Irapuato (Cuota)

CLAVE: 00423

RUTA: MEX-045D

AÑO: 2025

LUGAR	ESTACION				CLASIFICACION VEHICULAR EN PORCIENTO										COORDENADAS					
	KM	TE	SC	TDPA	M	A	B	C2	C3	T3S2	T3S3	T3S2R4	OTROS	A	B	C	K'	D	LATITUD	LONGITUD
Querétaro	0.00	3	1	23112	2.8	72.3	5.7	5.7	3.6	6.5	1.7	1.3	0.4	75.1	5.7	19.2	0.090	0.508	20.576622	-100.420409
Querétaro	0.00	3	2	23910	2.6	70.3	6.2	6.2	4.1	6.8	2.0	1.4	0.4	72.9	6.2	20.9	0.088	0.508	20.576519	-100.420415
Plaza de Cobro Querétaro	7.00	2	1	8187	0.4	67.7	2.4	7.0	4.6	12.8	1.2	2.8	1.1	68.1	2.4	29.5	0.079	0.500	20.572203	-100.472827
Plaza de Cobro Querétaro	7.00	2	2	8187	0.4	67.7	2.4	7.0	4.6	12.8	1.2	2.8	1.1	68.1	2.4	29.5	0.079	0.500	20.572203	-100.472827
Lim. Edos. Term. Oro. Ppia. Gto.	8.97																			
T. C. Palmillas - Apaseo el Grande (Cuota)	24.50	1	1	18386	1.9	65.7	2.5	7.2	5.8	12.3	1.7	2.4	0.5	67.6	2.5	29.9	0.066	0.528	20.536584	-100.608030
T. C. Palmillas - Apaseo el Grande (Cuota)	24.50	1	2	16490	2.0	65.3	2.5	7.3	5.7	12.4	1.7	2.4	0.7	67.3	2.5	30.2	0.083	0.528	20.536605	-100.607746
T. C. Palmillas - Apaseo el Grande (Cuota)	24.50	3	1	17614	1.8	66.5	2.3	7.6	5.5	12.4	1.3	2.0	0.6	68.3	2.3	29.4	0.073	0.578	20.532345	-100.635171
T. C. Palmillas - Apaseo el Grande (Cuota)	24.50	3	2	15504	1.9	66.1	2.4	7.5	5.6	12.5	1.2	2.2	0.6	68.0	2.4	29.6	0.070	0.578	20.532265	-100.631426
T. C. Libramiento de Celaya (Cuota)	37.20	3	1	21637	1.0	66.2	4.9	6.4	5.6	12.0	1.6	2.0	0.3	67.2	4.9	27.9	0.066	0.544	20.552430	-100.767939
T. C. Libramiento de Celaya (Cuota)	37.20	3	2	20274	1.1	66.3	4.9	6.5	5.5	11.9	1.5	1.9	0.4	67.4	4.9	27.7	0.059	0.544	20.552265	-100.767883
X. C. Celaya - Dolores Hidalgo	44.10	1	1	21359	1.0	69.8	5.6	8.2	2.4	10.3	1.1	1.3	0.3	70.8	5.6	23.6	0.075	0.511	20.557372	-100.815725
X. C. Celaya - Dolores Hidalgo	44.10	1	2	18502	1.1	68.5	5.5	8.3	2.7	11.5	1.4	0.8	0.2	69.6	5.5	24.9	0.090	0.511	20.557236	-100.815995
T. Der. Juventino Rosas	63.00	1	1	16647	2.3	66.7	6.0	10.9	3.4	8.0	1.1	1.3	0.3	69.0	6.0	25.0	0.082	0.504	20.580538	-100.989541
T. Der. Juventino Rosas	63.00	1	2	15287	2.1	65.5	6.2	11.4	3.7	8.2	1.0	1.5	0.4	67.6	6.2	26.2	0.077	0.504	20.580330	-100.989229
T. Der. Juventino Rosas	63.00	3	1	18569	1.5	68.6	5.3	10.5	2.7	8.7	0.8	1.5	0.4	70.1	5.3	24.6	0.067	0.504	20.582236	-101.001738
T. Der. Juventino Rosas	63.00	3	2	17165	1.6	68.6	5.4	10.1	2.8	9.0	0.7	1.5	0.3	70.2	5.4	24.4	0.073	0.504	20.581734	-100.999366
T. C. Salamanca - León (Cuota)	78.00	1	1	15932	2.8	61.6	5.9	13.9	3.4	8.1	1.4	2.4	0.5	64.4	5.9	29.7	0.061	0.505	20.589764	-101.112017
T. C. Salamanca - León (Cuota)	78.00	1	2	16727	2.6	63.1	5.8	13.4	3.2	8.2	1.2	2.0	0.5	65.7	5.8	28.5	0.066	0.505	20.589587	-101.111822

QUERÉTARO

10 CARR: Querétaro - Irapuato (Cuota)

CLAVE: 00423

RUTA: MEX-045D

AÑO: 2025

LUGAR	ESTACION				CLASIFICACION VEHICULAR EN PORCIENTO													COORDENADAS		
	KM	TE	SC	TDPA	M	A	B	C2	C3	T3S2	T3S3	T3S2R4	OTROS	A	B	C	K'	D	LATITUD	LONGITUD
T. Izq. Salamanca	81.54	1	1	7386	1.2	63.3	7.0	9.2	3.4	11.6	1.1	2.5	0.7	64.5	7.0	28.5	0.075	0.546	20.593207	-101.154109
T. Izq. Salamanca	81.54	1	2	8262	1.4	62.7	7.1	9.0	3.6	11.7	1.2	2.5	0.8	64.1	7.1	28.8	0.069	0.546	20.593041	-101.154162
T. Izq. Salamanca	81.54	3	1	8058	3.9	58.2	5.8	9.4	4.0	12.2	2.4	3.5	0.6	62.1	5.8	32.1	0.071	0.502	20.599764	-101.187147
T. Izq. Salamanca	81.54	3	2	9257	4.2	57.0	5.7	9.5	4.1	12.3	2.7	3.9	0.6	61.2	5.7	33.1	0.067	0.502	20.599608	-101.187189
Plaza de Cobro Salamanca	83.25	2	1	6630	0.3	60.3	2.9	5.9	5.9	16.7	1.9	5.1	1.0	60.6	2.9	36.5	0.079	0.500	20.598482	-101.180975
Plaza de Cobro Salamanca	83.25	2	2	6630	0.3	60.3	2.9	5.9	5.9	16.7	1.9	5.1	1.0	60.6	2.9	36.5	0.079	0.500	20.598482	-101.180975
T. Der. Libramiento de Irapuato	96.30	1	1	8065	1.5	62.7	6.1	10.4	3.7	10.5	1.6	2.9	0.6	64.2	6.1	29.7	0.063	0.554	20.651450	-101.284175
T. Der. Libramiento de Irapuato	96.30	1	2	7569	1.4	63.9	6.4	9.9	3.3	10.3	1.4	2.8	0.6	65.3	6.4	28.3	0.075	0.554	20.651050	-101.283829
T. Der. Libramiento de Irapuato	96.30	3	1	20901	2.1	69.1	3.9	8.5	3.2	8.6	2.1	2.0	0.5	71.2	3.9	24.9	0.071	0.583	20.654294	-101.297552
T. Der. Libramiento de Irapuato	96.30	3	2	19739	2.4	69.2	3.5	8.7	3.6	8.5	2.2	1.5	0.4	71.6	3.5	24.9	0.086	0.583	20.654187	-101.297600
X. C. Querétaro - Irapuato (Libre)	97.00	3	1	16562	2.8	69.4	2.7	9.3	3.7	8.3	1.6	1.8	0.4	72.2	2.7	25.1	0.078	0.609	20.653269	-101.308915
X. C. Querétaro - Irapuato (Libre)	97.00	3	2	18336	2.8	68.9	2.4	9.5	3.8	8.6	1.9	1.8	0.3	71.7	2.4	25.9	0.083	0.609	20.653139	-101.308702
T. C. Irapuato - Zapotlanejo	104.70																			

11 CARR: México - Querétaro (Cuota)

CLAVE: 00411

RUTA: MEX-057-MEX-057D

AÑO: 2025

LUGAR	ESTACION				CLASIFICACION VEHICULAR EN PORCIENTO													COORDENADAS		
	KM	TE	SC	TDPA	M	A	B	C2	C3	T3S2	T3S3	T3S2R4	OTROS	A	B	C	K'	D	LATITUD	LONGITUD
México	0.00																			
Lim. Edos. Term. CDMX Ppia. Méx.	11.30																			
Lechería	29.41																			
Plaza de Cobro Tepoztlán	43.01	2	1	33105	0.6	74.5	3.6	4.2	3.1	10.9	0.6	2.0	0.5	75.1	3.6	21.3	0.077	0.500	19.715361	-99.207448
Plaza de Cobro Tepoztlán	43.01	2	2	33105	0.6	74.5	3.6	4.2	3.1	10.9	0.6	2.0	0.5	75.1	3.6	21.3	0.077	0.500	19.715361	-99.207448
Ent. Jorobas	56.18	1	1	35058	1.4	67.5	4.6	7.8	3.3	11.1	1.4	2.1	0.8	68.9	4.6	26.5	0.071	0.515	19.811452	-99.238518
Ent. Jorobas	56.18	1	2	32877	1.3	67.7	4.8	7.7	3.0	10.9	1.5	2.3	0.8	69.0	4.8	26.2	0.061	0.515	19.801501	-99.234163
Ent. Jorobas	56.18	3	1	47374	3.1	58.7	4.9	8.0	3.4	15.3	2.2	3.4	1.0	61.8	4.9	33.3	0.073	0.502	19.830902	-99.261767
Ent. Jorobas	56.18	3	2	46832	3.2	58.8	5.2	8.0	3.3	15.0	2.0	3.5	1.0	62.0	5.2	32.8	0.065	0.502	19.832742	-99.266979
Lim. Edos. Term. Méx. Ppia. Hgo.	59.85																			
T. Der. Tepeji del Río	69.36	1	1	38226	4.3	69.3	4.4	7.2	2.7	7.7	1.1	2.5	0.8	73.6	4.4	22.0	0.076	0.504	19.862948	-99.313324
T. Der. Tepeji del Río	69.36	1	2	37604	4.0	69.1	4.3	7.4	2.9	7.5	1.2	2.7	0.9	73.1	4.3	22.6	0.072	0.504	19.871090	-99.338581
T. Der. Tepeji del Río	69.36	3	1	34824	4.9	68.8	4.4	6.8	2.8	8.0	1.2	2.4	0.7	73.7	4.4	21.9	0.081	0.507	19.920808	-99.370317
T. Der. Tepeji del Río	69.36	3	2	35899	5.2	68.8	4.6	6.6	3.0	7.8	1.0	2.2	0.8	74.0	4.6	21.4	0.095	0.507	19.920713	-99.370409
T. Izq. Jilotepec	83.75	1	1	34363	5.4	68.7	3.2	7.4	2.8	7.9	1.4	2.7	0.5	74.1	3.2	22.7	0.078	0.518	19.972297	-99.434174
T. Izq. Jilotepec	83.75	1	2	31829	5.3	68.7	3.3	7.5	2.7	7.8	1.5	2.6	0.6	74.0	3.3	22.7	0.064	0.518	19.977553	-99.437938
T. Izq. Jilotepec	83.75	3	1	39638	4.8	66.7	5.2	7.5	3.0	7.9	1.7	2.7	0.5	71.5	5.2	23.3	0.080	0.522	19.989624	-99.458452

QUERÉTARO

11 CARR: México - Querétaro (Cuota)

CLAVE: 00411

RUTA: MEX-057-MEX-057D

AÑO: 2025

LUGAR	ESTACION				CLASIFICACION VEHICULAR EN PORCIENTO										COORDENADAS					
	KM	TE	SC	TDPA	M	A	B	C2	C3	T3S2	T3S3	T3S2R4	OTROS	A	B	C	K'	D	LATITUD	LONGITUD
T. Izq. Jilotepec	83.75	3	2	35936	4.9	66.3	5.3	7.4	3.1	8.0	1.6	2.8	0.6	71.2	5.3	23.5	0.066	0.522	19.989961	-99.460589
Lim. Edos. Term. Hgo. Ppia. Méx.	86.00																			
X. C. Libramiento Norte de La Ciudad de México (Cuota)	89.44	3	1	36629	5.3	66.0	5.3	7.0	3.0	7.3	2.3	3.0	0.8	71.3	5.3	23.4	0.087	0.516	20.005679	-99.501744
X. C. Libramiento Norte de La Ciudad de México (Cuota)	89.44	3	2	39260	5.2	66.6	5.2	6.9	2.9	7.2	2.2	2.9	0.9	71.8	5.2	23.0	0.059	0.516	20.003037	-99.497872
T. Der. Palos Altos	97.80	1	1	34755	4.6	68.2	4.2	7.0	2.7	8.2	1.7	2.6	0.8	72.8	4.2	23.0	0.059	0.515	20.024352	-99.532214
T. Der. Palos Altos	97.80	1	2	37193	4.5	68.6	4.1	6.9	2.6	8.1	1.8	2.7	0.7	73.1	4.1	22.8	0.070	0.515	20.034691	-99.557880
X. C. Jilotepec - Maravillas	107.00	1	1	30424	5.3	64.6	4.0	4.4	3.8	11.3	1.7	4.3	0.6	69.9	4.0	26.1	0.076	0.505	20.080814	-99.619565
X. C. Jilotepec - Maravillas	107.00	1	2	31092	5.2	64.6	4.1	4.3	3.9	11.2	1.6	4.4	0.7	69.8	4.1	26.1	0.090	0.505	20.076023	-99.614275
X. C. Jilotepec - Maravillas	107.00	3	1	35296	4.5	57.3	9.1	5.7	2.5	14.2	1.9	3.9	0.9	61.8	9.1	29.1	0.062	0.513	20.082412	-99.635857
X. C. Jilotepec - Maravillas	107.00	3	2	33383	4.6	57.3	9.0	5.8	2.6	14.3	1.8	3.8	0.8	61.9	9.0	29.1	0.081	0.513	20.082545	-99.633639
T. Izq. Aculco	114.80	1	1	35622	5.2	58.3	7.0	5.0	3.0	14.8	1.8	4.1	0.8	63.5	7.0	29.5	0.071	0.513	20.097492	-99.692855
T. Izq. Aculco	114.80	1	2	37653	5.1	58.2	6.9	5.1	3.1	14.8	1.9	4.2	0.7	63.3	6.9	29.8	0.070	0.513	20.091274	-99.686658
T. Izq. Aculco	114.80	3	1	33068	4.7	58.6	7.5	6.5	2.6	12.8	1.9	4.6	0.8	63.3	7.5	29.2	0.078	0.510	20.109956	-99.707256
T. Izq. Aculco	114.80	3	2	34652	4.6	59.4	7.4	6.4	2.5	12.7	1.8	4.5	0.7	64.0	7.4	28.6	0.078	0.510	20.108553	-99.704275
T. Izq. Encinillas	121.70	1	1	33572	5.0	59.6	7.1	5.0	2.5	14.1	2.2	3.7	0.8	64.6	7.1	28.3	0.067	0.516	20.134260	-99.728711
T. Izq. Encinillas	121.70	1	2	35987	4.9	59.4	7.2	5.1	2.4	14.2	2.3	3.6	0.9	64.3	7.2	28.5	0.074	0.516	20.145772	-99.734718
Polotitlán	133.00	1	1	37344	5.4	60.4	7.5	3.9	3.1	12.9	2.4	3.5	0.9	65.8	7.5	26.7	0.064	0.514	20.218615	-99.801690
Polotitlán	133.00	1	2	35140	5.3	61.0	7.4	3.8	3.0	12.8	2.3	3.6	0.8	66.3	7.4	26.3	0.066	0.514	20.220127	-99.803885
Lim. Edos. Term. Méx. Ppia. Qro.	145.50																			
Plaza de Cobro Palmillas	147.92	2	1	20593	0.5	62.6	3.1	5.7	4.2	17.8	1.5	3.6	1.0	63.1	3.1	33.8	0.077	0.500	20.296112	-99.929069
Plaza de Cobro Palmillas	147.92	2	2	20593	0.5	62.6	3.1	5.7	4.2	17.8	1.5	3.6	1.0	63.1	3.1	33.8	0.077	0.500	20.296112	-99.929069
T. Izq. Toluca	148.50	1	1	31729	4.7	61.7	5.1	4.1	3.1	14.5	1.9	4.1	0.8	66.4	5.1	28.5	0.063	0.501	20.287531	-99.913603
T. Izq. Toluca	148.50	1	2	31643	4.6	61.9	5.0	4.0	3.0	14.6	2.0	4.0	0.9	66.5	5.0	28.5	0.062	0.501	20.284618	-99.909280
T. Izq. Toluca	148.50	3	1	36767	1.6	63.9	6.1	6.7	4.0	12.1	2.1	2.6	0.9	65.5	6.1	28.4	0.052	0.507	20.312937	-99.931635
T. Izq. Toluca	148.50	3	2	37954	1.7	64.5	6.0	6.6	3.9	12.0	2.0	2.5	0.8	66.2	6.0	27.8	0.058	0.507	20.320155	-99.934129
T. Der. Portezuelo	151.53	3	1	41721	5.4	60.4	6.8	5.9	2.7	13.4	1.7	3.1	0.6	65.8	6.8	27.4	0.069	0.515	20.336805	-99.941322
T. Der. Portezuelo	151.53	3	2	44638	5.3	60.8	6.9	5.8	2.6	13.3	1.6	3.0	0.7	66.1	6.9	27.0	0.078	0.515	20.336182	-99.941335
T. Der. Poniente San Juan del Río	164.10	3	1	48201	7.4	65.5	5.4	5.3	2.5	8.4	1.3	3.4	0.8	72.9	5.4	21.7	0.067	0.516	20.373858	-99.994415
T. Der. Poniente San Juan del Río	164.10	3	2	51687	6.7	63.9	5.9	5.3	2.8	9.5	1.5	3.5	0.9	70.6	5.9	23.5	0.074	0.516	20.371958	-99.990429
La Estancia	169.40	1	1	54514	5.3	67.7	5.5	4.7	2.9	9.0	1.5	2.5	0.9	73.0	5.5	21.5	0.064	0.519	20.423616	-100.052184
La Estancia	169.40	1	2	59573	5.0	66.6	6.0	5.3	2.3	9.4	1.5	2.9	1.0	71.6	6.0	22.4	0.064	0.519	20.424627	-100.053668
T. Izq. Acámbaro	170.45	3	1	46171	5.1	66.9	5.6	5.4	2.0	10.2	1.3	2.7	0.8	72.0	5.6	22.4	0.068	0.521	20.447708	-100.079273
T. Izq. Acámbaro	170.45	3	2	50750	5.0	64.9	5.7	5.3	2.4	11.9	1.3	2.7	0.8	69.9	5.7	24.4	0.080	0.521	20.449870	-100.082324
T. Izq. El Sauz	176.50	3	1	44655	6.0	65.2	4.3	6.1	2.9	10.1	1.7	2.9	0.8	71.2	4.3	24.5	0.074	0.522	20.477787	-100.110907
T. Izq. El Sauz	176.50	3	2	49266	6.0	66.9	3.5	6.2	2.7	9.7	1.6	2.5	0.9	72.9	3.5	23.6	0.071	0.522	20.497764	-100.133968

QUERÉTARO

11 CARR: México - Querétaro (Cuota)

CLAVE: 00411

RUTA: MEX-057-MEX-057D

AÑO: 2025

LUGAR	ESTACION				CLASIFICACION VEHICULAR EN PORCIENTO												COORDENADAS			
	KM	TE	SC	TDPA	M	A	B	C2	C3	T3S2	T3S3	T3S2R4	OTROS	A	B	C	K'	D	LATITUD	LONGITUD
T. Der. San Ildefonso	185.30	1	1	47364	4.2	72.0	4.2	6.9	1.1	7.5	1.8	1.5	0.8	76.2	4.2	19.6	0.068	0.536	20.520999	-100.168478
T. Der. San Ildefonso	185.30	1	2	55634	3.8	73.2	4.2	6.4	1.3	7.3	1.7	1.3	0.8	77.0	4.2	18.8	0.072	0.536	20.517352	-100.163871
T. Der. Libramiento Nororiente de Querétaro (Cuota)	192.50	1	1	52291	3.5	74.7	4.2	6.1	1.5	6.5	1.3	1.7	0.5	78.2	4.2	17.6	0.071	0.528	20.552636	-100.215635
T. Der. Libramiento Nororiente de Querétaro (Cuota)	192.50	1	2	59322	3.1	72.9	4.6	7.0	1.7	6.8	1.4	1.9	0.6	76.0	4.6	19.4	0.068	0.528	20.551670	-100.214620
T. Der. Libramiento Nororiente de Querétaro (Cuota)	192.50	3	1	59721	1.9	77.6	2.8	7.9	1.8	4.8	1.7	0.8	0.7	79.5	2.8	17.7	0.069	0.513	20.562649	-100.237209
T. Der. Libramiento Nororiente de Querétaro (Cuota)	192.50	3	2	63486	1.7	75.5	3.0	9.0	1.9	5.3	1.9	0.9	0.8	77.2	3.0	19.8	0.068	0.513	20.561690	-100.234789
T. Der. Libramiento de Querétaro (Blv. Bernardo Quintana)	207.00	1	1	78772	2.2	83.8	1.4	2.8	2.3	4.1	0.6	2.0	0.8	86.0	1.4	12.6	0.071	0.510	20.573484	-100.324051
T. Der. Libramiento de Querétaro (Blv. Bernardo Quintana)	207.00	1	2	82461	1.9	82.6	1.5	3.3	2.6	4.5	0.7	2.0	0.9	84.5	1.5	14.0	0.092	0.510	20.574475	-100.330940
T. Der. Libramiento de Querétaro (Blv. Bernardo Quintana)	207.00	3	1	39181	2.1	91.2	0.6	4.0	0.3	0.7	0.6	0.3	0.2	93.3	0.6	6.1	0.076	0.505	20.579404	-100.375490
T. Der. Libramiento de Querétaro (Blv. Bernardo Quintana)	207.00	3	1	73667	1.8	82.8	1.8	4.4	1.6	4.5	1.5	0.8	0.8	84.6	1.8	13.6	0.067	0.518	20.578195	-100.380764
T. Der. Libramiento de Querétaro (Blv. Bernardo Quintana)	207.00	3	2	80072	1.5	81.3	1.9	5.0	1.7	5.2	1.6	0.9	0.9	82.8	1.9	15.3	0.064	0.518	20.578513	-100.378541
T. Der. Libramiento de Querétaro (Blv. Bernardo Quintana)	207.00	3	2	40092	2.2	91.0	0.6	4.1	0.3	0.7	0.6	0.3	0.2	93.2	0.6	6.2	0.075	0.505	20.578375	-100.378506
Querétaro	211.60																			

12 CARR: Ajuchitlán - Colón

CLAVE: 22010

RUTA: QRO-005

AÑO: 2025

LUGAR	ESTACION				CLASIFICACION VEHICULAR EN PORCIENTO												COORDENADAS			
	KM	TE	SC	TDPA	M	A	B	C2	C3	T3S2	T3S3	T3S2R4	OTROS	A	B	C	K'	D	LATITUD	LONGITUD
T. C. El Colorado - Higuierillas	0.00	3	1	5936	2.5	90.1	0.4	4.3	1.8	0.6	0.2	0.1	0.0	92.6	0.4	7.0	0.094	0.503	20.694499	-100.016273
T. C. El Colorado - Higuierillas	0.00	3	2	6003	2.6	90.2	0.3	4.0	1.9	0.5	0.3	0.2	0.0	92.8	0.3	6.9	0.094	0.503	20.694465	-100.016363
Colón	14.00	1	1	5598	3.3	92.4	1.2	2.3	0.4	0.2	0.1	0.1	0.0	95.7	1.2	3.1	0.093	0.507	20.763321	-100.045676
Colón	14.00	1	2	5440	3.1	92.6	1.0	2.5	0.4	0.2	0.1	0.1	0.0	95.7	1.0	3.3	0.088	0.507	20.763271	-100.045756

13 CARR: Ajuchitlán - Ezequiel Montes

CLAVE: 22005

RUTA: QRO-005

AÑO: 2025

LUGAR	ESTACION				CLASIFICACION VEHICULAR EN PORCIENTO												COORDENADAS			
	KM	TE	SC	TDPA	M	A	B	C2	C3	T3S2	T3S3	T3S2R4	OTROS	A	B	C	K'	D	LATITUD	LONGITUD
T. C. El Colorado - Higuierillas	0.00	3	1	10379	2.2	85.8	1.8	4.6	1.8	1.7	1.4	0.6	0.1	88.0	1.8	10.2	0.099	0.503	20.703417	-99.977895
T. C. El Colorado - Higuierillas	0.00	3	2	10504	2.2	85.8	2.1	4.7	1.6	1.7	1.3	0.5	0.1	88.0	2.1	9.9	0.083	0.503	20.703492	-99.977836
Ezequiel Montes	10.60	1	0	15314	1.6	91.1	0.5	4.2	1.0	0.5	0.4	0.3	0.4	92.7	0.5	6.8	0.090	0.508	20.670104	-99.909865

QUERÉTARO

14 CARR: El Colorado - Higuerrillas

CLAVE: 22004

RUTA: QRO-004

AÑO: 2025

LUGAR	ESTACION				CLASIFICACION VEHICULAR EN PORCIENTO													COORDENADAS		
	KM	TE	SC	TDPA	M	A	B	C2	C3	T3S2	T3S3	T3S2R4	OTROS	A	B	C	K'	D	LATITUD	LONGITUD
T. C. México - Querétaro (Cuota)	0.00	3	1	31574	1.6	75.5	1.9	9.7	4.0	4.2	1.3	1.5	0.3	77.1	1.9	21.0	0.104	0.518	20.573850	-100.206968
T. C. México - Querétaro (Cuota)	0.00	3	2	29431	1.5	75.8	2.0	9.6	3.9	4.1	1.2	1.6	0.3	77.3	2.0	20.7	0.079	0.518	20.573107	-100.208123
T. Izq. Chichimequillas	3.80	3	1	20315	1.7	81.9	1.1	7.4	2.3	2.7	1.6	1.0	0.3	83.6	1.1	15.3	0.080	0.504	20.605768	-100.166169
T. Izq. Chichimequillas	3.80	3	2	19967	1.6	81.9	1.0	7.5	2.4	2.8	1.5	1.1	0.2	83.5	1.0	15.5	0.087	0.504	20.605865	-100.166204
X. C. Querétaro - Tequisquiapan	9.10	3	1	15020	1.9	84.4	1.0	6.0	1.7	2.5	1.2	0.9	0.4	86.3	1.0	12.7	0.085	0.505	20.618007	-100.139178
X. C. Querétaro - Tequisquiapan	9.10	3	2	14735	2.0	84.1	1.1	6.2	1.6	2.6	1.3	0.8	0.3	86.1	1.1	12.8	0.120	0.505	20.618053	-100.139261
T. Der. Ezequiel Montes	31.90	1	1	13044	2.8	77.8	1.5	7.3	4.5	2.5	1.7	1.6	0.3	80.6	1.5	17.9	0.104	0.510	20.699546	-99.997761
T. Der. Ezequiel Montes	31.90	1	2	12507	2.7	78.2	1.4	7.2	4.6	2.6	1.6	1.5	0.2	80.9	1.4	17.7	0.132	0.510	20.699670	-99.997794
T. Der. Ezequiel Montes	31.90	3	1	6207	2.5	89.9	1.5	2.5	1.1	1.2	1.0	0.3	0.0	92.4	1.5	6.1	0.127	0.502	20.710122	-99.978564
T. Der. Ezequiel Montes	31.90	3	2	6260	2.4	89.7	1.7	2.6	1.2	1.4	0.8	0.2	0.0	92.1	1.7	6.2	0.142	0.502	20.710230	-99.978619
T. Izq. San Pablo Tolimán	57.00	3	0	2152	2.4	86.5	1.9	4.1	1.8	1.6	0.8	0.6	0.3	88.9	1.9	9.2	0.114	0.511	20.856016	-99.886133
T. C. San Juan del Río - Xilitla	81.90	1	0	2274	3.1	90.4	1.1	3.9	0.9	0.5	0.1	0.0	0.0	93.5	1.1	5.4	0.092	0.502	20.939173	-99.750397

15 CARR: Hacienda Paraíso - Chichimequillas

CLAVE: 22001

RUTA: QRO-001

AÑO: 2025

LUGAR	ESTACION				CLASIFICACION VEHICULAR EN PORCIENTO													COORDENADAS		
	KM	TE	SC	TDPA	M	A	B	C2	C3	T3S2	T3S3	T3S2R4	OTROS	A	B	C	K'	D	LATITUD	LONGITUD
Hacienda Paraíso	0.00	3	1	7567	4.0	78.0	2.8	6.7	3.7	2.8	0.9	0.8	0.3	82.0	2.8	15.2	0.101	0.527	20.587207	-100.204125
Hacienda Paraíso	0.00	3	2	8445	4.1	78.0	2.9	6.8	3.6	2.7	0.8	0.8	0.3	82.1	2.9	15.0	0.132	0.527	20.587172	-100.204202
T. Der. Navajas	7.90	3	0	23136	2.5	81.9	1.7	7.0	3.1	2.1	0.8	0.7	0.2	84.4	1.7	13.9	0.074	0.505	20.644744	-100.231947
La Griega	10.35	3	0	12586	2.6	79.2	1.9	8.1	3.3	2.9	1.3	0.5	0.2	81.8	1.9	16.3	0.082	0.508	20.675565	-100.239893
Amazcala	15.45	3	0	9291	3.5	73.7	2.2	8.9	4.3	4.8	1.6	0.7	0.3	77.2	2.2	20.6	0.102	0.512	20.714271	-100.272583
Chichimequillas	26.61																			

16 CARR: Huimilpan - El Lindero

CLAVE: 00155

RUTA: QRO-GTO

AÑO: 2025

LUGAR	ESTACION				CLASIFICACION VEHICULAR EN PORCIENTO													COORDENADAS		
	KM	TE	SC	TDPA	M	A	B	C2	C3	T3S2	T3S3	T3S2R4	OTROS	A	B	C	K'	D	LATITUD	LONGITUD
Huimilpan	0.00																			
T. C. Palmillas - Apaseo el Grande (Cuota)	2.60	1	0	3286	2.6	91.3	1.4	2.0	1.0	1.0	0.2	0.2	0.3	93.9	1.4	4.7	0.111	0.511	20.353015	-100.278309
T. C. Palmillas - Apaseo el Grande (Cuota)	2.60	3	0	2226	2.7	94.2	0.4	1.3	0.7	0.4	0.1	0.1	0.1	96.9	0.4	2.7	0.104	0.503	20.346025	-100.280059
Lim. Edos. Term. Oro. Ppia. Gto.	17.50																			
El Lindero	20.50																			

QUERÉTARO

17 CARR: La Culata - San Joaquín

CLAVE: 22021

RUTA: QRO-021

AÑO: 2025

LUGAR	ESTACION				CLASIFICACION VEHICULAR EN PORCIENTO												COORDENADAS			
	KM	TE	SC	TDPA	M	A	B	C2	C3	T3S2	T3S3	T3S2R4	OTROS	A	B	C	K'	D	LATITUD	LONGITUD
La Culata	0.00	3	0	1853	4.1	80.4	0.7	3.2	2.2	6.1	2.6	0.7	0.0	84.5	0.7	14.8	0.097	0.513	20.886891	-99.701244
San Joaquín	31.80	1	0	1835	3.0	91.5	0.7	3.3	1.0	0.3	0.1	0.1	0.0	94.5	0.7	4.8	0.093	0.500	20.893849	-99.577495

18 CARR: Libramiento de San Juan del Río

CLAVE: 22266

RUTA: QRO

AÑO: 2025

LUGAR	ESTACION				CLASIFICACION VEHICULAR EN PORCIENTO												COORDENADAS			
	KM	TE	SC	TDPA	M	A	B	C2	C3	T3S2	T3S3	T3S2R4	OTROS	A	B	C	K'	D	LATITUD	LONGITUD
T. C. México - Querétaro (Después del F.F.C.C.)	0.00	3	1	18265	8.2	76.7	2.0	3.8	1.8	3.3	0.8	2.6	0.8	84.9	2.0	13.1	0.064	0.510	20.379232	-99.985686
T. C. México - Querétaro (Después del F.F.C.C.)	0.00	3	2	19022	8.3	77.0	1.9	3.9	1.7	3.2	0.6	2.7	0.7	85.3	1.9	12.8	0.066	0.510	20.379113	-99.985868
T. C. San Juan del Río - Xilitla	5.05	1	1	24290	6.6	83.2	1.4	2.4	1.8	2.1	0.6	1.5	0.4	89.8	1.4	8.8	0.085	0.520	20.412940	-99.981288
T. C. San Juan del Río - Xilitla	5.05	1	2	22406	6.7	83.3	1.3	2.5	1.6	2.0	0.5	1.6	0.5	90.0	1.3	8.7	0.080	0.520	20.412956	-99.981451

19 CARR: Libramiento Norte de Querétaro

CLAVE: 22500

RUTA: QRO

AÑO: 2025

LUGAR	ESTACION				CLASIFICACION VEHICULAR EN PORCIENTO												COORDENADAS			
	KM	TE	SC	TDPA	M	A	B	C2	C3	T3S2	T3S3	T3S2R4	OTROS	A	B	C	K'	D	LATITUD	LONGITUD
T. C. Querétaro - San Luis Potosí	0.00	3	1	83221	2.7	93.3	0.6	2.0	0.3	0.3	0.4	0.3	0.1	96.0	0.6	3.4	0.082	0.514	20.619516	-100.410932
T. C. Querétaro - San Luis Potosí	0.00	3	2	88742	2.5	92.8	0.8	2.2	0.3	0.5	0.4	0.3	0.2	95.3	0.8	3.9	0.063	0.514	20.620626	-100.413988
T. C. México - Querétaro	8.00	1	1	77342	1.4	92.9	0.4	2.0	0.4	0.9	0.7	0.8	0.5	94.3	0.4	5.3	0.076	0.505	20.584150	-100.362174
T. C. México - Querétaro	8.00	1	2	79224	1.6	91.6	0.4	2.1	0.6	1.2	0.7	1.1	0.7	93.2	0.4	6.4	0.073	0.505	20.584099	-100.362021
T. C. México - Querétaro	8.00	3	1	45399	2.1	92.8	0.4	3.4	0.6	0.3	0.1	0.2	0.1	94.9	0.4	4.7	0.094	0.507	20.566078	-100.357079
T. C. México - Querétaro	8.00	3	2	43944	2.0	93.3	0.3	3.3	0.4	0.2	0.1	0.3	0.1	95.3	0.3	4.4	0.108	0.507	20.567228	-100.357165
T.C. Libramiento Surponiente de Querétaro	12.00																			

20 CARR: Libramiento Surponiente de Querétaro

CLAVE: 22501

RUTA: QRO

AÑO: 2025

LUGAR	ESTACION				CLASIFICACION VEHICULAR EN PORCIENTO												COORDENADAS			
	KM	TE	SC	TDPA	M	A	B	C2	C3	T3S2	T3S3	T3S2R4	OTROS	A	B	C	K'	D	LATITUD	LONGITUD
X. C. Querétaro - Ent. San Martín	0.00	3	1	47885	2.0	93.3	0.4	3.4	0.5	0.2	0.1	0.1	0.0	95.3	0.4	4.3	0.088	0.510	20.551863	-100.371293
X. C. Querétaro - Ent. San Martín	0.00	3	2	50120	2.3	92.9	0.4	3.3	0.4	0.3	0.1	0.2	0.1	95.2	0.4	4.4	0.115	0.510	20.551769	-100.371221
T. Der. a Candiles	4.20	1	1	34719	2.7	92.7	0.3	2.4	1.1	0.3	0.2	0.2	0.1	95.4	0.3	4.3	0.111	0.511	20.537489	-100.393973
T. Der. a Candiles	4.20	1	2	33085	2.9	93.3	0.5	2.2	0.7	0.1	0.1	0.1	0.1	96.2	0.5	3.3	0.101	0.511	20.537972	-100.390759
T. Izq. a Santa Bárbara (1º acceso)	5.00	1	1	36352	2.8	92.8	0.3	2.6	0.7	0.3	0.2	0.2	0.1	95.6	0.3	4.1	0.090	0.512	20.534006	-100.398610
T. Izq. a Santa Bárbara (1º acceso)	5.00	1	2	34415	2.9	93.0	0.3	2.3	0.7	0.4	0.1	0.1	0.2	95.9	0.3	3.8	0.098	0.512	20.534204	-100.398243
T. Izq. a Santa Bárbara (2º acceso)	7.30	3	1	22297	2.6	93.4	0.4	2.0	1.1	0.4	0.1	0.0	0.0	96.0	0.4	3.6	0.092	0.507	20.524870	-100.426382

QUERÉTARO

20 CARR: Libramiento Surponiente de Querétaro

CLAVE: 22501

RUTA: QRO

AÑO: 2025

LUGAR	ESTACION				CLASIFICACION VEHICULAR EN PORCIENTO										COORDENADAS					
	KM	TE	SC	TDPA	M	A	B	C2	C3	T3S2	T3S3	T3S2R4	OTROS	A	B	C	K'	D	LATITUD	LONGITUD
T. Izq. a Santa Bárbara (2º acceso)	7.30	3	2	21681	2.5	93.8	0.4	2.0	0.9	0.2	0.0	0.1	0.1	96.3	0.4	3.3	0.108	0.507	20.526006	-100.422930
T. C. Villa del Pueblito - Huimilpan	9.40	3	1	14830	2.5	93.8	0.5	2.2	0.8	0.1	0.0	0.0	0.1	96.3	0.5	3.2	0.104	0.512	20.529893	-100.445966
T. C. Villa del Pueblito - Huimilpan	9.40	3	2	15545	2.4	93.8	0.5	2.1	0.7	0.3	0.0	0.1	0.1	96.2	0.5	3.3	0.153	0.512	20.529725	-100.445893
T. Izq. a La Negreta	10.10	3	1	12895	2.8	90.9	0.6	3.0	1.4	0.8	0.2	0.2	0.1	93.7	0.6	5.7	0.095	0.515	20.525635	-100.462921
T. Izq. a La Negreta	10.10	3	2	13675	2.9	90.8	0.4	3.3	1.4	0.8	0.2	0.1	0.1	93.7	0.4	5.9	0.100	0.515	20.525613	-100.462661
Querétaro - Irapuato	15.00	1	1	9316	2.5	91.4	0.5	2.8	1.5	0.8	0.2	0.3	0.0	93.9	0.5	5.6	0.095	0.508	20.535397	-100.479584
Querétaro - Irapuato	15.00	1	2	9607	2.4	91.5	0.5	2.8	1.5	0.8	0.2	0.2	0.1	93.9	0.5	5.6	0.117	0.508	20.532023	-100.480009
T. C. Querétaro - Irapuato (Cuota)	18.60	1	1	23226	3.9	85.1	1.4	4.1	1.0	3.0	0.5	0.8	0.2	89.0	1.4	9.6	0.086	0.514	20.553986	-100.481769
T. C. Querétaro - Irapuato (Cuota)	18.60	1	2	24530	3.9	84.4	1.3	4.1	1.2	3.0	0.7	1.1	0.3	88.3	1.3	10.4	0.094	0.514	20.555825	-100.482171
T. C. Querétaro - Irapuato (Cuota)	18.60	3	1	34773	2.0	85.6	1.7	3.8	1.4	3.8	0.6	0.9	0.2	87.6	1.7	10.7	0.081	0.511	20.578679	-100.483697
T. C. Querétaro - Irapuato (Cuota)	18.60	3	2	33229	2.0	85.4	2.2	3.7	1.2	3.9	0.5	0.7	0.4	87.4	2.2	10.4	0.086	0.511	20.577491	-100.483037
T. Der. a Las Adjuntas	21.00	3	1	31607	2.3	85.8	1.3	3.8	1.7	3.4	0.6	0.9	0.2	88.1	1.3	10.6	0.092	0.511	20.596638	-100.490161
T. Der. a Las Adjuntas	21.00	3	2	33113	2.3	86.4	1.3	3.7	1.5	3.2	0.5	0.7	0.4	88.7	1.3	10.0	0.097	0.511	20.594765	-100.490054
T. Der. a Tlacote el Bajo	27.70	1	1	37010	5.3	84.2	1.1	3.3	1.4	3.2	0.4	0.9	0.2	89.5	1.1	9.4	0.085	0.526	20.634905	-100.499565
T. Der. a Tlacote el Bajo	27.70	1	2	33014	5.0	83.5	1.3	3.6	1.7	3.3	0.4	1.0	0.2	88.5	1.3	10.2	0.087	0.526	20.634901	-100.499688
T. Der. a Tlacote el Bajo	27.70	3	1	16658	4.5	79.7	1.8	4.0	2.1	5.8	0.6	1.2	0.3	84.2	1.8	14.0	0.129	0.522	20.653791	-100.512178
T. Der. a Tlacote el Bajo	27.70	3	2	18162	4.3	78.8	2.0	4.2	2.3	5.9	0.8	1.3	0.4	83.1	2.0	14.9	0.111	0.522	20.653687	-100.512219
Obrajuelos (El Zapote)	29.70	3	1	16652	4.1	77.4	1.9	6.0	2.7	5.2	0.9	1.4	0.4	81.5	1.9	16.6	0.116	0.511	20.661934	-100.515457
Obrajuelos (El Zapote)	29.70	3	2	15952	4.3	78.1	2.1	5.7	2.5	4.9	0.7	1.3	0.4	82.4	2.1	15.5	0.109	0.511	20.662141	-100.515358
Santo Niño de Praga	31.20	3	1	16818	4.6	76.1	2.2	5.9	2.5	5.8	0.9	1.6	0.4	80.7	2.2	17.1	0.129	0.502	20.671173	-100.508218
Santo Niño de Praga	31.20	3	2	16716	4.8	75.3	2.4	5.7	2.6	6.1	1.0	1.7	0.4	80.1	2.4	17.5	0.109	0.502	20.671212	-100.508330
X. C. juriquilla - Mompani	34.00	3	1	11987	3.0	76.4	2.6	6.4	2.1	6.6	0.9	1.6	0.4	79.4	2.6	18.0	0.133	0.506	20.692504	-100.493121
X. C. juriquilla - Mompani	34.00	3	2	11704	3.3	77.1	2.4	6.2	1.9	6.4	0.9	1.5	0.3	80.4	2.4	17.2	0.137	0.506	20.692601	-100.493176
T. Der. a El Nabo	36.30	3	1	12631	3.3	76.2	2.9	5.8	2.0	6.8	1.0	1.6	0.4	79.5	2.9	17.6	0.133	0.518	20.702091	-100.479703
T. Der. a El Nabo	36.30	3	2	11766	3.5	75.5	3.0	6.0	2.0	6.4	1.2	1.9	0.5	79.0	3.0	18.0	0.121	0.518	20.701291	-100.480250
Pie de Gallo	44.10	1	1	15917	2.6	79.0	2.9	5.9	1.7	5.3	0.9	1.4	0.3	81.6	2.9	15.5	0.112	0.503	20.745509	-100.459367
Pie de Gallo	44.10	1	2	15730	2.6	78.5	3.0	6.1	1.8	5.3	0.9	1.5	0.3	81.1	3.0	15.9	0.122	0.503	20.745551	-100.459493
Pie de Gallo	44.10	3	1	16845	1.9	81.2	1.5	6.2	1.7	4.5	1.0	1.5	0.5	83.1	1.5	15.4	0.161	0.510	20.756313	-100.447814
Pie de Gallo	44.10	3	2	17501	1.7	81.4	1.8	6.4	1.6	4.2	1.0	1.4	0.5	83.1	1.8	15.1	0.112	0.510	20.755686	-100.450895
T. C. Querétaro - San Luis Potosi	45.70																			

QUERÉTARO

21 CARR: Peña Colorada - El Rodeo

CLAVE: 22002

RUTA: QRO

AÑO: 2025

LUGAR	ESTACION				CLASIFICACION VEHICULAR EN PORCIENTO										COORDENADAS					
	KM	TE	SC	TDPA	M	A	B	C2	C3	T3S2	T3S3	T3S2R4	OTROS	A	B	C	K'	D	LATITUD	LONGITUD
T. C. México - Querétaro	0.00	3	1	20925	3.7	89.6	0.6	3.4	1.3	0.5	0.4	0.3	0.2	93.3	0.6	6.1	0.096	0.512	20.584306	-100.250876
T. C. México - Querétaro	0.00	3	2	21923	3.6	89.5	0.5	3.5	1.4	0.6	0.3	0.4	0.2	93.1	0.5	6.4	0.073	0.512	20.584436	-100.250949
X. C. Querétaro - Tequisquiapan	9.00	1	1	15476	4.4	85.8	1.0	4.9	1.9	0.8	0.3	0.6	0.3	90.2	1.0	8.8	0.080	0.503	20.633928	-100.260152
X. C. Querétaro - Tequisquiapan	9.00	1	2	15299	4.6	85.3	1.0	5.8	1.6	0.7	0.3	0.5	0.2	89.9	1.0	9.1	0.076	0.503	20.633997	-100.260285
El Rodeo	11.00	1	0	3707	6.5	81.1	1.4	9.7	0.7	0.4	0.1	0.0	0.1	87.6	1.4	11.0	0.073	0.519	20.658177	-100.259035

22 CARR: Querétaro - Ent. San Martín

CLAVE: 22067

RUTA: QRO

AÑO: 2025

LUGAR	ESTACION				CLASIFICACION VEHICULAR EN PORCIENTO										COORDENADAS					
	KM	TE	SC	TDPA	M	A	B	C2	C3	T3S2	T3S3	T3S2R4	OTROS	A	B	C	K'	D	LATITUD	LONGITUD
T. C. México - Querétaro	0.00	3	1	23647	3.1	92.5	0.7	2.1	0.6	0.4	0.2	0.3	0.1	95.6	0.7	3.7	0.095	0.502	20.558554	-100.366671
T. C. México - Querétaro	0.00	3	2	23878	2.8	93.0	0.8	2.3	0.4	0.3	0.1	0.2	0.1	95.8	0.8	3.4	0.110	0.502	20.558914	-100.366602
Lagunillas	18.70	1	0	6458	1.8	89.1	1.0	6.9	0.7	0.2	0.1	0.1	0.1	90.9	1.0	8.1	0.084	0.545	20.463210	-100.264987
T. Der. Huimilpan	32.70	1	0	8010	2.3	88.4	0.8	7.3	0.7	0.2	0.1	0.1	0.1	90.7	0.8	8.5	0.079	0.531	20.393721	-100.268878
Ent. San Martín	53.00	1	0	2951	3.4	78.4	5.0	9.9	1.4	1.5	0.4	0.0	0.0	81.8	5.0	13.2	0.111	0.503	20.278357	-100.158550

23 CARR: Querétaro - Estación Chichimequillas

CLAVE: 22270

RUTA: QRO

AÑO: 2025

LUGAR	ESTACION				CLASIFICACION VEHICULAR EN PORCIENTO										COORDENADAS					
	KM	TE	SC	TDPA	M	A	B	C2	C3	T3S2	T3S3	T3S2R4	OTROS	A	B	C	K'	D	LATITUD	LONGITUD
T. C. Libramiento de Querétaro	0.00	3	1	14285	4.7	89.8	0.6	3.8	0.4	0.3	0.2	0.1	0.1	94.5	0.6	4.9	0.103	0.531	20.625584	-100.387257
T. C. Libramiento de Querétaro	0.00	3	2	16189	4.9	89.0	0.8	4.3	0.3	0.3	0.2	0.1	0.1	93.9	0.8	5.3	0.115	0.531	20.625690	-100.387221
X. C. Hacienda Paraiso - Chichimequillas	18.00	1	1	4662	2.2	86.8	2.0	5.4	1.9	0.9	0.4	0.3	0.1	89.0	2.0	9.0	0.104	0.509	20.750564	-100.322486
X. C. Hacienda Paraiso - Chichimequillas	18.00	1	2	4833	2.5	86.7	2.2	5.2	1.7	0.9	0.4	0.3	0.1	89.2	2.2	8.6	0.096	0.509	20.750611	-100.322560
Estación Chichimequillas	19.20																			

24 CARR: Querétaro - Tequisquiapan

CLAVE: 22502

RUTA: QRO

AÑO: 2025

LUGAR	ESTACION				CLASIFICACION VEHICULAR EN PORCIENTO										COORDENADAS					
	KM	TE	SC	TDPA	M	A	B	C2	C3	T3S2	T3S3	T3S2R4	OTROS	A	B	C	K'	D	LATITUD	LONGITUD
Querétaro	0.00	3	1	10023	5.1	85.9	1.9	5.7	0.8	0.2	0.1	0.2	0.1	91.0	1.9	7.1	0.079	0.508	20.600245	-100.361775
Querétaro	0.00	3	2	10341	5.1	85.3	2.4	5.7	0.9	0.2	0.1	0.2	0.1	90.4	2.4	7.2	0.080	0.508	20.600272	-100.361660
X. C. Peña Colorada - El Rodeo	14.00	1	1	10835	3.3	85.4	1.8	7.1	1.5	0.5	0.2	0.1	0.1	88.7	1.8	9.5	0.088	0.518	20.633829	-100.266369
X. C. Peña Colorada - El Rodeo	14.00	1	2	11637	3.6	85.3	1.6	6.9	1.7	0.5	0.2	0.1	0.1	88.9	1.6	9.5	0.093	0.518	20.633996	-100.266319
T. Izq. La Griega	16.60	3	1	10552	3.7	88.4	1.5	3.5	1.2	1.1	0.3	0.2	0.1	92.1	1.5	6.4	0.131	0.503	20.642840	-100.225892

QUERÉTARO

24 CARR: Querétaro - Tequisquiapan

CLAVE: 22502

RUTA: QRO

AÑO: 2025

LUGAR	ESTACION				CLASIFICACION VEHICULAR EN PORCIENTO													COORDENADAS		
	KM	TE	SC	TDPA	M	A	B	C2	C3	T3S2	T3S3	T3S2R4	OTROS	A	B	C	K'	D	LATITUD	LONGITUD
T. Izq. La Griega	16.60	3	2	10674	4.0	87.5	1.7	3.7	1.4	1.0	0.4	0.2	0.1	91.5	1.7	6.8	0.133	0.503	20.643032	-100.226251
X. C. El Colorado - Higuierillas	25.70	1	1	13303	3.2	82.6	1.7	7.4	1.8	1.7	0.8	0.5	0.3	85.8	1.7	12.5	0.102	0.513	20.615919	-100.161769
X. C. El Colorado - Higuierillas	25.70	1	2	14009	3.1	83.4	1.6	7.3	1.7	1.6	0.7	0.4	0.2	86.5	1.6	11.9	0.102	0.513	20.615897	-100.161548
X. C. San Juan del Río - Xilitla	56.90	1	1	5939	7.7	83.7	2.3	4.3	0.6	0.7	0.4	0.3	0.0	91.4	2.3	6.3	0.103	0.501	20.528794	-99.914797
X. C. San Juan del Río - Xilitla	56.90	1	2	5905	7.9	83.1	2.1	4.5	0.7	0.8	0.5	0.4	0.0	91.0	2.1	6.9	0.112	0.501	20.528486	-99.911225
Tequisquiapan	57.40	1	0	12555	6.5	87.5	0.8	3.1	0.7	0.5	0.3	0.4	0.2	94.0	0.8	5.2	0.076	0.525	20.533751	-99.897631

25 CARR: Querétaro - Tlacote El Bajo

CLAVE: 22069

RUTA: QRO

AÑO: 2025

LUGAR	ESTACION				CLASIFICACION VEHICULAR EN PORCIENTO													COORDENADAS		
	KM	TE	SC	TDPA	M	A	B	C2	C3	T3S2	T3S3	T3S2R4	OTROS	A	B	C	K'	D	LATITUD	LONGITUD
Querétaro	0.00	3	1	12046	3.7	87.3	1.2	4.7	1.0	1.5	0.2	0.3	0.1	91.0	1.2	7.8	0.091	0.507	20.591229	-100.453855
Querétaro	0.00	3	2	11709	3.9	87.6	1.2	4.8	0.9	1.2	0.2	0.2	0.0	91.5	1.2	7.3	0.144	0.507	20.591144	-100.453866
Tlacote El Bajo	18.00																			

26 CARR: Ramal a La Estancia

CLAVE: 22504

RUTA: QRO

AÑO: 2025

LUGAR	ESTACION				CLASIFICACION VEHICULAR EN PORCIENTO													COORDENADAS		
	KM	TE	SC	TDPA	M	A	B	C2	C3	T3S2	T3S3	T3S2R4	OTROS	A	B	C	K'	D	LATITUD	LONGITUD
T. C. México - Querétaro (Cuota)	0.00	3	0	7841	9.8	81.2	1.4	5.5	0.9	0.8	0.1	0.3	0.0	91.0	1.4	7.6	0.092	0.508	20.424716	-100.063356
La Estancia	3.00																			

27 CARR: Ramal a Tolimán

CLAVE: 22265

RUTA: QRO

AÑO: 2025

LUGAR	ESTACION				CLASIFICACION VEHICULAR EN PORCIENTO													COORDENADAS		
	KM	TE	SC	TDPA	M	A	B	C2	C3	T3S2	T3S3	T3S2R4	OTROS	A	B	C	K'	D	LATITUD	LONGITUD
T. C. El Colorado - Higuierillas	0.00	3	0	4411	4.5	86.2	1.3	3.2	1.1	2.4	1.0	0.2	0.1	90.7	1.3	8.0	0.087	0.505	20.859227	-99.895083
Tolimán	7.00	1	0	4907	4.8	86.4	0.9	5.3	0.9	1.2	0.1	0.3	0.1	91.2	0.9	7.9	0.081	0.508	20.896073	-99.918665

28 CARR: Rayón - Arroyo Seco

CLAVE: 24008

RUTA: SLP-011

AÑO: 2025

LUGAR	ESTACION				CLASIFICACION VEHICULAR EN PORCIENTO													COORDENADAS		
	KM	TE	SC	TDPA	M	A	B	C2	C3	T3S2	T3S3	T3S2R4	OTROS	A	B	C	K'	D	LATITUD	LONGITUD
Rayón	0.00	3	0	1354	6.1	70.0	1.0	19.2	1.8	0.9	0.4	0.6	0.0	76.1	1.0	22.9	0.101	0.547	21.843496	-99.624870
Lagunillas	36.00	1	0	334	13.4	79.4	0.2	5.7	0.4	0.4	0.2	0.1	0.2	92.8	0.2	7.0	0.129	0.628	21.595118	-99.564718

QUERÉTARO

28 CARR: Rayón - Arroyo Seco

CLAVE: 24008

RUTA: SLP-011

AÑO: 2025

LUGAR	ESTACION				CLASIFICACION VEHICULAR EN PORCIENTO													COORDENADAS			
	KM	TE	SC	TDPA	M	A	B	C2	C3	T3S2	T3S3	T3S2R4	OTROS	A	B	C	K'	D	LATITUD	LONGITUD	
Lim. De Edos. Term. S.L.P. Ppia Oro.	51.00																				
Arroyo Seco	57.00	1	0	725	7.5	90.3	0.3	0.6	0.3	0.3	0.7	0.0	0.0	97.8	0.3	1.9	0.106	0.515	21.553844	-99.681295	

29 CARR: San Juan del Río - Amealco

CLAVE: 22011

RUTA: QRO

AÑO: 2025

LUGAR	ESTACION				CLASIFICACION VEHICULAR EN PORCIENTO													COORDENADAS		
	KM	TE	SC	TDPA	M	A	B	C2	C3	T3S2	T3S3	T3S2R4	OTROS	A	B	C	K'	D	LATITUD	LONGITUD
T. C. México - Querétaro	0.00	3	0	13362	4.0	90.7	0.8	3.4	0.5	0.3	0.1	0.2	0.0	94.7	0.8	4.5	0.091	0.522	20.373183	-100.017425
Amealco	28.00	1	0	6054	3.7	90.9	1.4	2.0	0.8	0.6	0.4	0.2	0.0	94.6	1.4	4.0	0.119	0.502	20.199121	-100.135424

30 CARR: T. C. (Villa del Pueblito - Huimilpan) - La Sabanilla

CLAVE: 00155

RUTA: QRO-GTO

AÑO: 2025

LUGAR	ESTACION				CLASIFICACION VEHICULAR EN PORCIENTO													COORDENADAS		
	KM	TE	SC	TDPA	M	A	B	C2	C3	T3S2	T3S3	T3S2R4	OTROS	A	B	C	K'	D	LATITUD	LONGITUD
T. C. Villa del Pueblito - Huimilpan	0.00	3	1	5501	2.4	90.9	0.2	3.9	1.5	0.6	0.2	0.2	0.1	93.3	0.2	6.5	0.123	0.507	20.499243	-100.423726
T. C. Villa del Pueblito - Huimilpan	0.00	3	2	5654	2.7	90.6	0.2	4.0	1.3	0.6	0.3	0.2	0.1	93.3	0.2	6.5	0.139	0.507	20.499285	-100.423657
T. der a Joaquín Herrera	7.00	3	1	4782	1.6	90.4	0.4	5.0	1.6	0.4	0.4	0.1	0.1	92.0	0.4	7.6	0.157	0.528	20.479344	-100.428821
T. der a Joaquín Herrera	7.00	3	2	5346	2.0	89.8	0.4	5.2	1.5	0.5	0.3	0.1	0.2	91.8	0.4	7.8	0.126	0.528	20.479333	-100.428718
Lim. Edos. Term. Oro. Ppia. Gto.	19.30																			
La Sabanilla	21.50																			

31 CARR: Villa del Pueblito - Huimilpan

CLAVE: 22503

RUTA: QRO

AÑO: 2025

LUGAR	ESTACION				CLASIFICACION VEHICULAR EN PORCIENTO													COORDENADAS		
	KM	TE	SC	TDPA	M	A	B	C2	C3	T3S2	T3S3	T3S2R4	OTROS	A	B	C	K'	D	LATITUD	LONGITUD
T. C. Querétaro - Irapuato (Libre)	0.00	3	1	20831	3.3	90.7	0.4	3.1	1.0	0.5	0.2	0.6	0.2	94.0	0.4	5.6	0.104	0.511	20.529601	-100.441387
T. C. Querétaro - Irapuato (Libre)	0.00	3	2	18788	3.4	90.7	0.4	3.0	1.1	0.5	0.2	0.4	0.3	94.1	0.4	5.5	0.089	0.511	20.529971	-100.441251
Huimilpan	27.00	1	0	2815	3.0	89.7	0.4	5.8	0.5	0.3	0.1	0.1	0.1	92.7	0.4	6.9	0.099	0.511	20.379636	-100.278873

32 CARR: Toluca - Palmillas

CLAVE: 00496

RUTA: EM(D)-MEX-055

AÑO: 2025

LUGAR	ESTACION				CLASIFICACION VEHICULAR EN PORCIENTO													COORDENADAS		
	KM	TE	SC	TDPA	M	A	B	C2	C3	T3S2	T3S3	T3S2R4	OTROS	A	B	C	K'	D	LATITUD	LONGITUD
Toluca	0.00																			
T. Izq. Calixtlahuaca de Rayón (Alta)	7.21	3	1	33508	2.7	90.5	0.9	3.4	0.7	0.9	0.4	0.3	0.2	93.2	0.9	5.9	0.087	0.505	19.340743	-99.671172

QUERÉTARO

32 CARR: Toluca - Palmillas

CLAVE: 00496

RUTA: EM(D)-MEX-055

AÑO: 2025

LUGAR	ESTACION				CLASIFICACION VEHICULAR EN PORCIENTO										COORDENADAS					
	KM	TE	SC	TDPA	M	A	B	C2	C3	T3S2	T3S3	T3S2R4	OTROS	A	B	C	K'	D	LATITUD	LONGITUD
T. Izq. Calixtlahuaca de Rayón (Baja)	7.21	3	1	11868	7.9	65.2	5.9	9.1	3.2	5.7	1.1	1.5	0.4	73.1	5.9	21.0	0.089	0.506	19.341034	-99.670325
T. Izq. Calixtlahuaca de Rayón (Alta)	7.21	3	2	32854	3.0	90.2	0.6	3.8	0.7	1.1	0.3	0.2	0.1	93.2	0.6	6.2	0.091	0.505	19.340049	-99.670951
T. Izq. Calixtlahuaca de Rayón (Baja)	7.21	3	2	12169	8.1	65.3	6.0	9.2	3.4	5.8	1.1	0.9	0.2	73.4	6.0	20.6	0.090	0.506	19.339998	-99.671097
X. C. Lib. Nororient de Toluca (Cuota)	14.21	1	1	38054	3.8	82.1	2.9	4.3	1.5	3.2	0.6	1.3	0.3	85.9	2.9	11.2	0.081	0.509	19.382327	-99.704860
X. C. Lib. Nororient de Toluca (Cuota)	14.21	1	2	36647	3.9	81.7	3.2	4.3	1.7	2.9	0.6	1.2	0.5	85.6	3.2	11.2	0.083	0.509	19.379019	-99.702999
El Dorado	16.00	1	1	37142	2.3	79.1	3.5	5.6	2.0	5.7	0.8	0.8	0.2	81.4	3.5	15.1	0.073	0.508	19.401232	-99.712970
El Dorado	16.00	1	2	35825	1.8	79.0	3.3	6.0	2.2	5.8	0.8	0.9	0.2	80.8	3.3	15.9	0.073	0.508	19.401164	-99.713273
T. C. Amomolulco - T. C. (Toluca - Palmillas)	19.76	1	1	16508	2.6	76.4	5.0	6.0	2.4	5.0	1.2	1.1	0.3	79.0	5.0	16.0	0.080	0.520	19.429205	-99.724661
T. C. Amomolulco - T. C. (Toluca - Palmillas)	19.76	1	2	17859	2.4	77.5	4.0	6.0	2.1	5.4	1.1	1.2	0.3	79.9	4.0	16.1	0.082	0.520	19.428564	-99.724742
Ixtlahuaca de Rayón	31.20	1	1	28104	3.1	79.9	3.5	3.7	1.6	5.7	1.0	1.2	0.3	83.0	3.5	13.5	0.065	0.525	19.556728	-99.759254
Ixtlahuaca de Rayón	31.20	1	2	33074	2.8	80.6	3.1	3.9	1.8	5.3	0.9	1.3	0.3	83.4	3.1	13.5	0.080	0.525	19.556957	-99.759717
Ixtlahuaca de Rayón	31.20	3	1	24305	2.8	79.4	2.6	7.6	1.5	4.4	0.7	0.8	0.2	82.2	2.6	15.2	0.081	0.507	19.581848	-99.763870
Ixtlahuaca de Rayón	31.20	3	2	23665	3.0	78.5	2.4	7.4	1.8	4.8	0.9	1.0	0.2	81.5	2.4	16.1	0.090	0.507	19.584279	-99.769367
T. C. Ixtlahuaca de Rayón - Naucalpan	32.20	1	1	20624	2.4	80.1	2.7	5.7	2.3	4.7	0.9	1.0	0.2	82.5	2.7	14.8	0.079	0.526	19.567414	-99.760397
T. C. Ixtlahuaca de Rayón - Naucalpan	32.20	1	2	22914	2.5	79.9	2.9	5.5	1.8	5.0	1.0	1.1	0.3	82.4	2.9	14.7	0.092	0.526	19.562879	-99.761323
Pastejé	45.20	1	1	21941	1.8	77.0	3.4	6.9	2.0	6.5	0.9	1.2	0.3	78.8	3.4	17.8	0.084	0.506	19.631875	-99.780481
Pastejé	45.20	1	2	22496	1.5	77.6	3.3	6.9	1.8	6.3	1.4	0.9	0.3	79.1	3.3	17.6	0.092	0.506	19.632676	-99.781099
Pastejé	45.20	3	1	20915	1.6	77.4	3.6	7.0	1.7	6.3	1.4	0.8	0.2	79.0	3.6	17.4	0.087	0.508	19.657776	-99.793245
Pastejé	45.20	3	2	21605	1.8	76.4	3.4	7.2	2.1	6.6	1.0	1.2	0.3	78.2	3.4	18.4	0.098	0.508	19.656027	-99.792391
Atlacomulco	65.00	1	1	21347	2.8	78.3	3.0	5.7	1.8	6.1	1.0	1.0	0.3	81.1	3.0	15.9	0.076	0.516	19.779633	-99.863493
Atlacomulco	65.00	1	2	22767	2.2	77.4	3.0	5.8	2.1	6.8	1.1	1.2	0.4	79.6	3.0	17.4	0.077	0.516	19.781727	-99.864612
Atlacomulco	65.00	3	1	20380	2.3	78.7	2.6	5.2	2.1	6.0	1.5	1.2	0.4	81.0	2.6	16.4	0.089	0.514	19.811199	-99.871801
Atlacomulco	65.00	3	2	19262	2.0	78.9	2.4	5.2	1.7	6.4	1.7	1.2	0.5	80.9	2.4	16.7	0.100	0.514	19.811211	-99.871891
T. C. Atlacomulco-Maravatio (Cuota)	70.50																			
X. C. Libramiento Norte de la Ciudad de México (Cuota)	81.52	1	1	10650	1.1	82.8	2.2	4.8	1.6	5.2	1.1	0.6	0.6	83.9	2.2	13.9	0.087	0.507	19.911011	-99.848311
X. C. Libramiento Norte de la Ciudad de México (Cuota)	81.52	1	2	10376	1.1	81.1	2.5	5.3	1.7	5.8	1.3	0.6	0.6	82.2	2.5	15.3	0.123	0.507	19.911045	-99.848389
X. C. Libramiento Norte de la Ciudad de México (Cuota)	81.52	3	1	10836	2.1	78.8	3.2	5.0	1.7	7.1	1.1	0.7	0.3	80.9	3.2	15.9	0.092	0.506	19.930299	-99.842027
X. C. Libramiento Norte de la Ciudad de México (Cuota)	81.52	3	2	10575	2.3	78.7	3.0	4.7	1.9	6.8	1.3	1.0	0.3	81.0	3.0	16.0	0.104	0.506	19.928992	-99.842093
Acambay	85.64	3	0	11188	2.3	91.6	1.2	2.3	1.0	0.9	0.3	0.3	0.1	93.9	1.2	4.9	0.087	0.505	19.964439	-99.852457
T. Der. Aculco de Espinoza	104.43	1	1	6647	2.5	68.4	3.0	9.4	3.2	10.3	1.8	1.1	0.3	70.9	3.0	26.1	0.080	0.517	20.080000	-99.862977
T. Der. Aculco de Espinoza	104.43	1	2	7120	2.7	68.9	2.7	9.2	2.9	10.6	1.6	1.1	0.3	71.6	2.7	25.7	0.096	0.517	20.079958	-99.863048
T. Der. Aculco de Espinoza	104.43	3	1	6794	2.6	68.0	4.3	8.8	2.7	10.5	1.6	1.2	0.3	70.6	4.3	25.1	0.102	0.501	20.128258	-99.862576
T. Der. Aculco de Espinoza	104.43	3	2	6775	2.6	67.9	3.9	9.0	2.5	10.7	1.8	1.3	0.3	70.5	3.9	25.6	0.118	0.501	20.128250	-99.862664
T. Der. Polotitlán	122.73	1	1	7098	2.8	67.8	4.8	9.0	3.2	9.6	1.6	1.0	0.2	70.6	4.8	24.6	0.121	0.513	20.226979	-99.900672
T. Der. Polotitlán	122.73	1	2	7491	3.0	67.1	4.6	9.3	2.9	9.9	1.8	1.1	0.3	70.1	4.6	25.3	0.112	0.513	20.226917	-99.900733

QUERÉTARO

32 CARR: Toluca - Palmillas

CLAVE: 00496

RUTA: EM(D)-MEX-055

AÑO: 2025

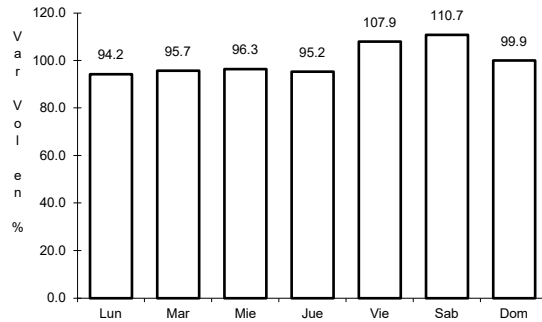
LUGAR	ESTACION				CLASIFICACION VEHICULAR EN PORCIENTO										COORDENADAS					
	KM	TE	SC	TDPA	M	A	B	C2	C3	T3S2	T3S3	T3S2R4	OTROS	A	B	C	K'	D	LATITUD	LONGITUD
Lim. Edos. Term. Méx. Ppia. Qro.	128.10																			
T. C. Palmillas - Apaseo el Grande (Cuota)	130.60	1	1	10274	2.1	73.3	3.6	6.9	2.8	8.8	1.3	0.9	0.3	75.4	3.6	21.0	0.092	0.509	20.280267	-99.931033
T. C. Palmillas - Apaseo el Grande (Cuota)	130.60	1	2	10652	2.2	73.4	3.3	6.7	2.6	9.0	1.5	1.0	0.3	75.6	3.3	21.1	0.149	0.509	20.280235	-99.931112
T. C. México - Querétaro	131.52	1	1	9670	1.6	72.5	3.5	7.1	3.3	8.2	1.9	1.2	0.7	74.1	3.5	22.4	0.094	0.514	20.294452	-99.933093
T. C. México - Querétaro	131.52	1	2	9145	1.7	72.3	3.6	7.0	3.2	8.3	1.8	1.4	0.7	74.0	3.6	22.4	0.099	0.514	20.294775	-99.933227



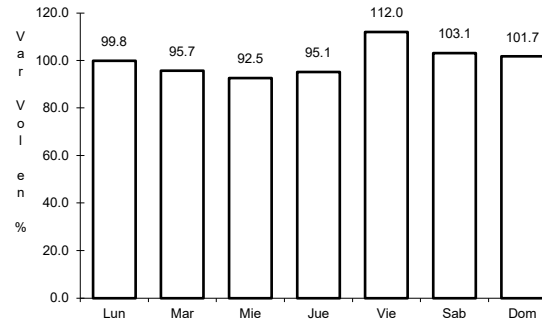
1 CARR: Ent. Buenavista - San Miguel de Allende

CLAVE: 00111

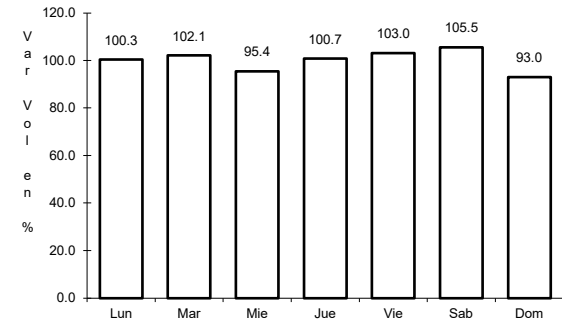
ruta: MEX-057



Km: 0.00                      Tipo: 3                      Sent: 0



Km: 12.00                      Tipo: 1                      Sent: 0

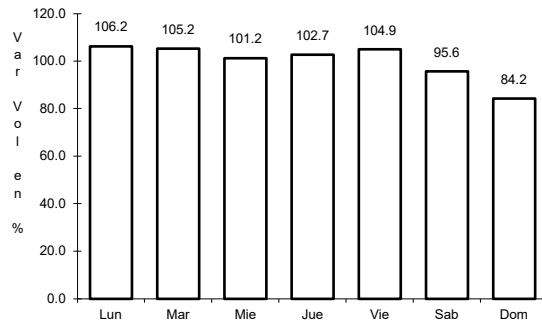


Km: 35.11                      Tipo: 1                      Sent: 0

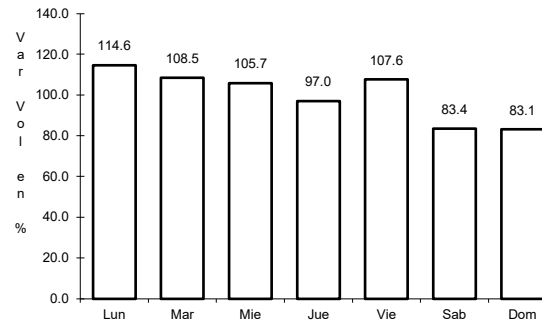
2 CARR: Jalpan de Serra - Rioverde

CLAVE: 00265

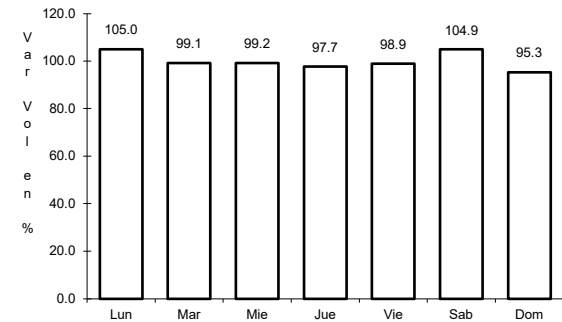
ruta: MEX-069



Km: 0.00                      Tipo: 3                      Sent: 0



Km: 48.60                      Tipo: 1                      Sent: 0

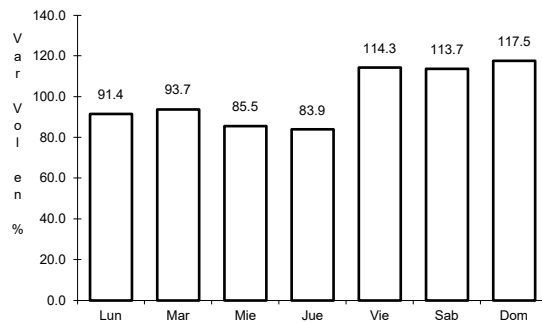


Km: 105.43                      Tipo: 1                      Sent: 0

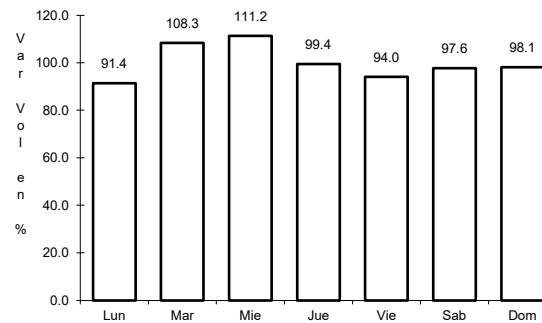
3 CARR: La Noria - Acámbaro

CLAVE: 00131

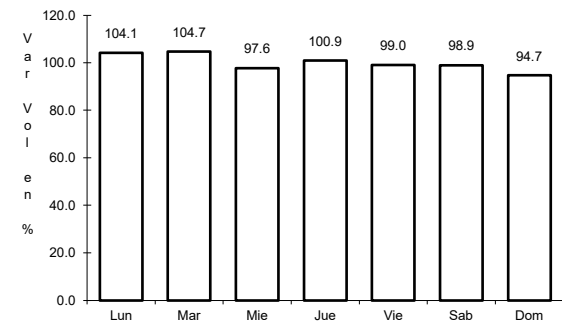
ruta: MEX-120



Km: 0.00                      Tipo: 3                      Sent: 0



Km: 59.35                      Tipo: 3                      Sent: 0

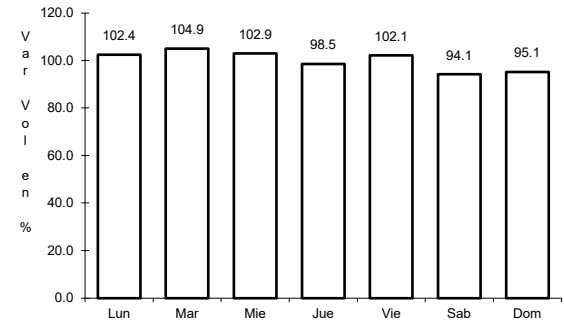
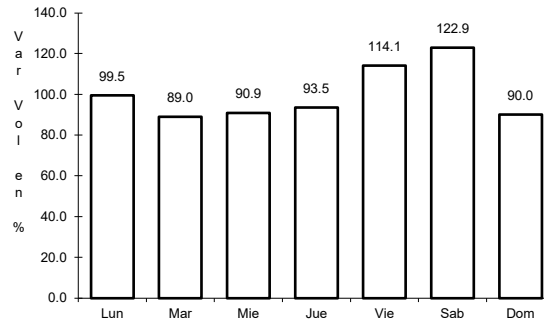
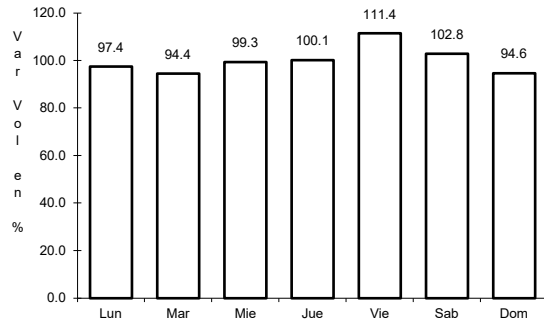


Km: 111.12                      Tipo: 1                      Sent: 0

4 CARR: Portezuelo - Palmillas

CLAVE: 00194

ruta: MEX-045



Km: 0.00      Tipo: 3      Sent: 1

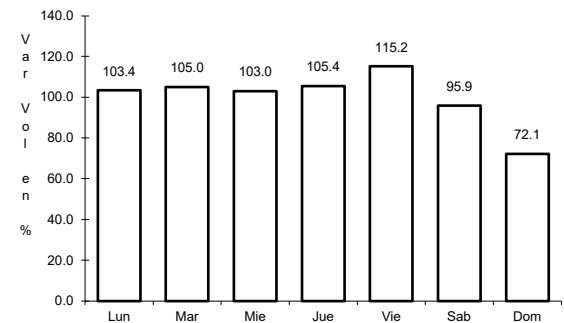
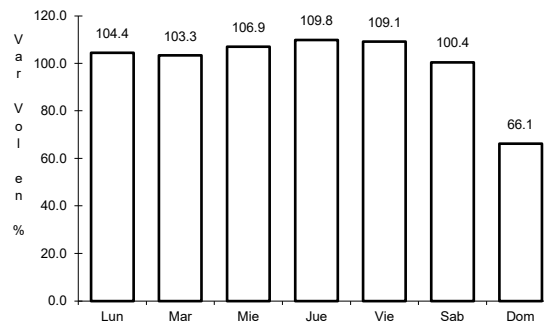
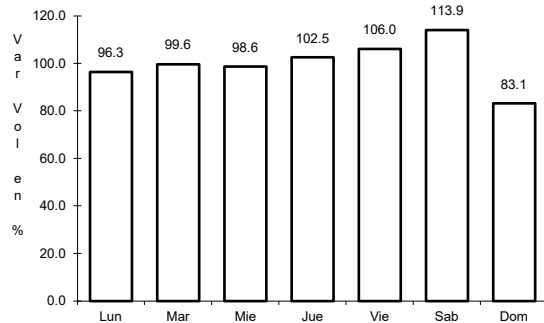
Km: 0.00      Tipo: 3      Sent: 2

Km: 80.00      Tipo: 1      Sent: 1

5 CARR: Querétaro - Irapuato (Libre)

CLAVE: 00154

ruta: MEX-045



Km: 0.00      Tipo: 3      Sent: 1

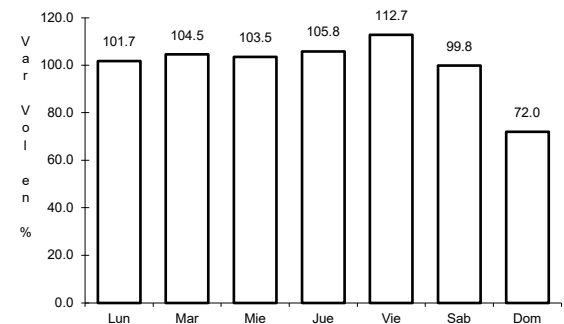
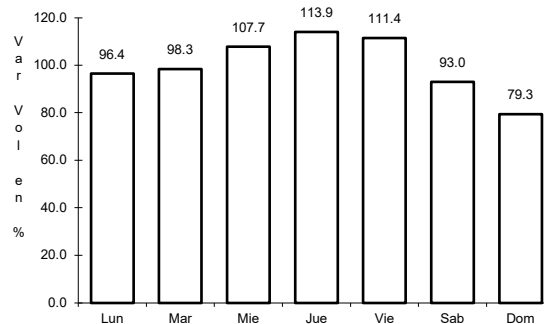
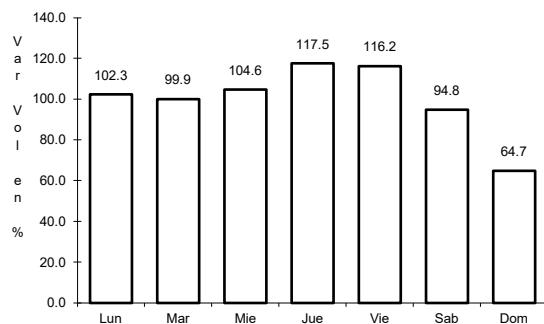
Km: 0.00      Tipo: 3      Sent: 2

Km: 113.70      Tipo: 1      Sent: 1

6 CARR: Querétaro - San Luis Potosí

CLAVE: 00165

ruta: MEX-057



Km: 6.28      Tipo: 3      Sent: 1

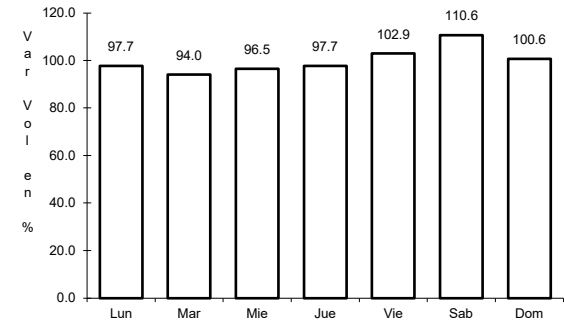
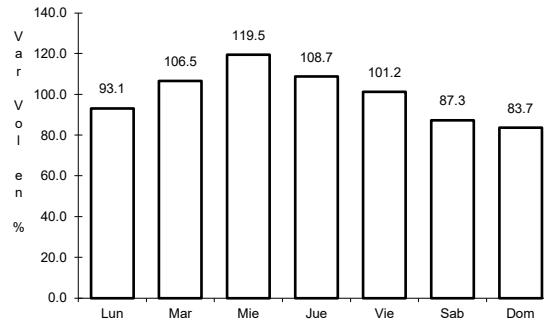
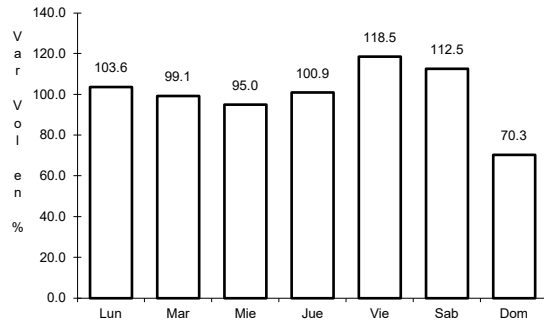
Km: 6.28      Tipo: 3      Sent: 2

Km: 184.80      Tipo: 1      Sent: 1

7 CARR: San Juan del Río - Xilitla

CLAVE: 00183

ruta: MEX-120



Km: 5.20                      Tipo: 3                      Sent: 1

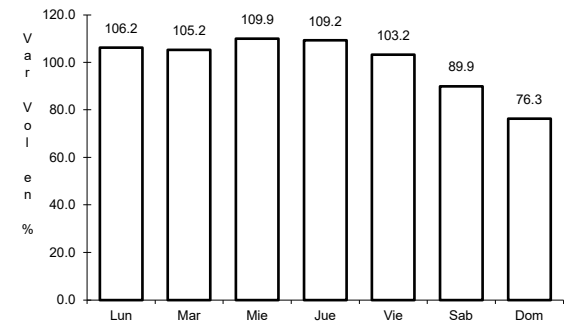
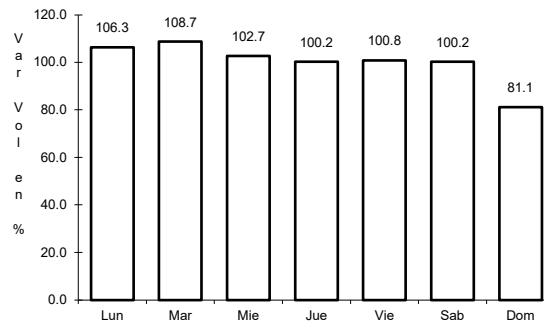
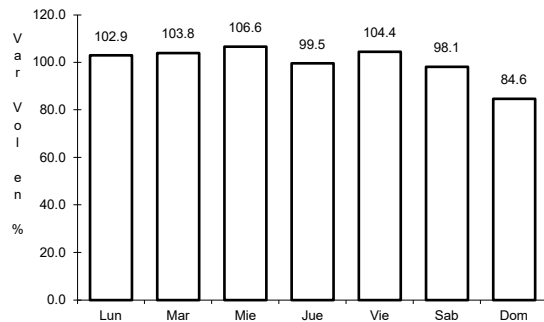
Km: 5.20                      Tipo: 3                      Sent: 2

Km: 276.98                      Tipo: 1                      Sent: 0

8 CARR: Libramiento Nororiente de Querétaro (Cuota)

CLAVE: 22266

ruta: MEX-057D



Km: 0.00                      Tipo: 3                      Sent: 1

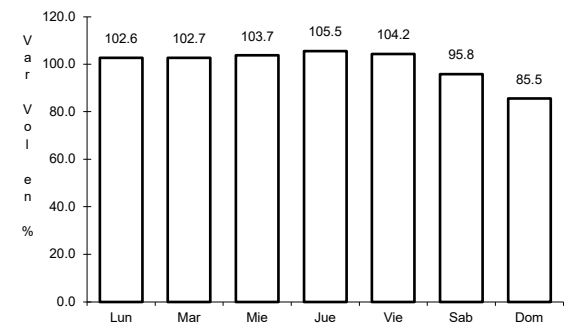
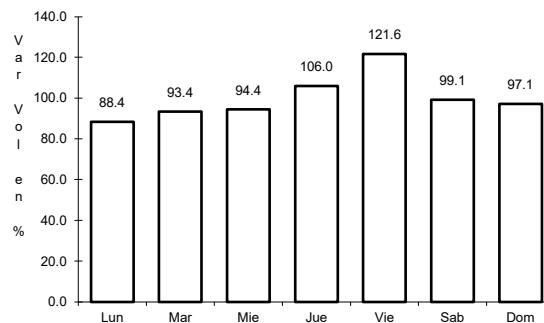
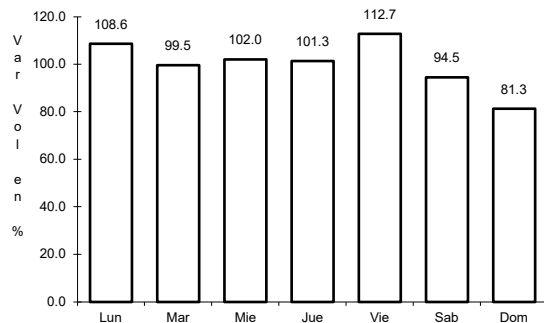
Km: 0.00                      Tipo: 3                      Sent: 2

Km: 37.50                      Tipo: 1                      Sent: 1

9 CARR: Palmillas - Apaseo el Grande (Cuota)

CLAVE:

ruta: MEX-045D



Km: 1.60                      Tipo: 1                      Sent: 1

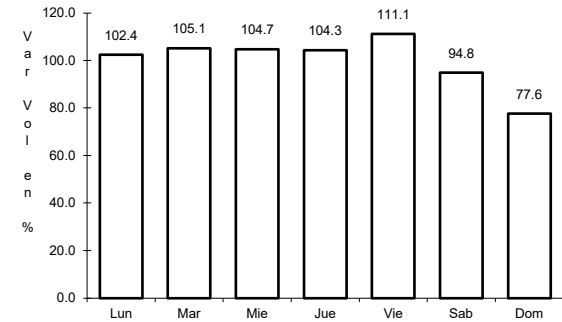
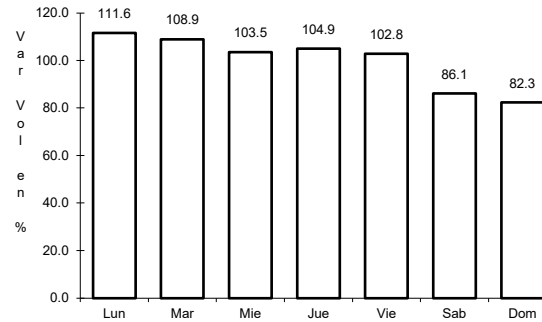
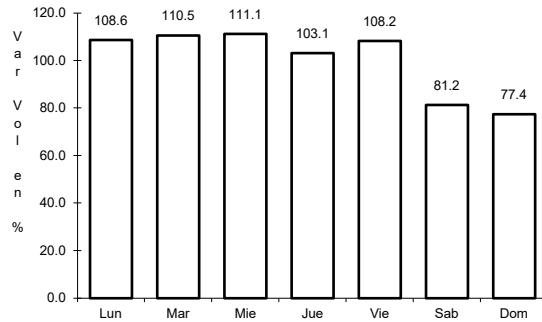
Km: 1.60                      Tipo: 1                      Sent: 2

Km: 85.20                      Tipo: 1                      Sent: 1

10 CARR: Querétaro - Irapuato (Cuota)

CLAVE: 00423

ruta: MEX-045D



Km: 0.00                      Tipo: 3                      Sent: 1

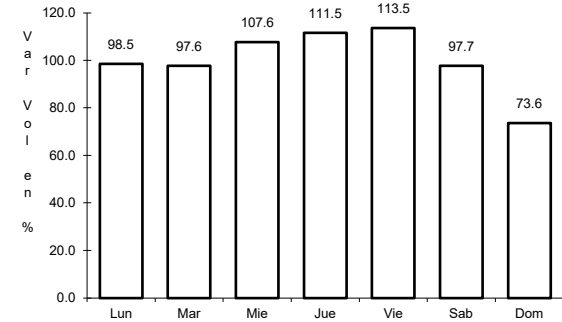
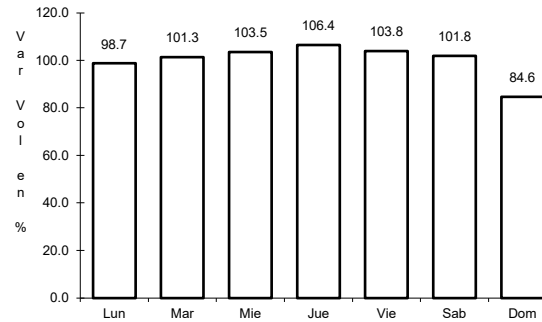
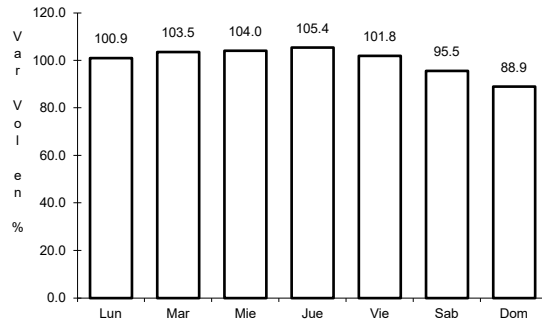
Km: 0.00                      Tipo: 3                      Sent: 2

Km: 96.30                      Tipo: 3                      Sent: 1

11 CARR: México - Querétaro (Cuota)

CLAVE: 00411

ruta: MEX-057-MEX-057D



Km: 56.18                      Tipo: 1                      Sent: 1

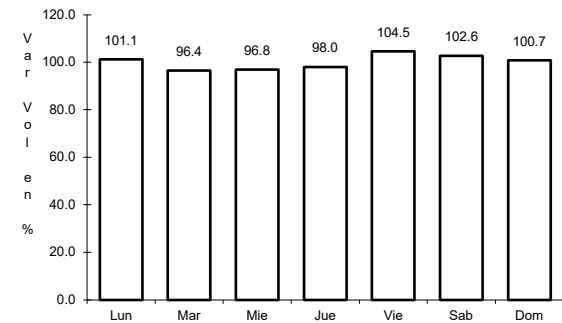
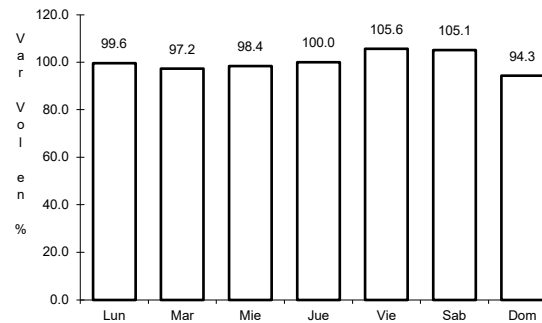
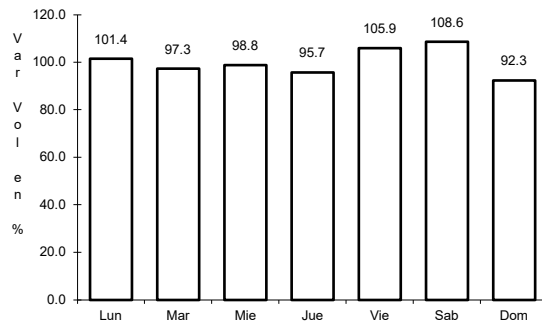
Km: 56.18                      Tipo: 1                      Sent: 2

Km: 207.00                      Tipo: 3                      Sent: 1

12 CARR: Ajuchitlán - Colón

CLAVE: 22010

ruta: QRO-005



Km: 0.00                      Tipo: 3                      Sent: 1

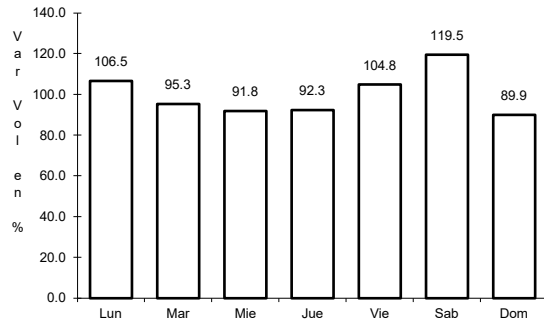
Km: 14.00                      Tipo: 1                      Sent: 1

Km: 14.00                      Tipo: 1                      Sent: 2

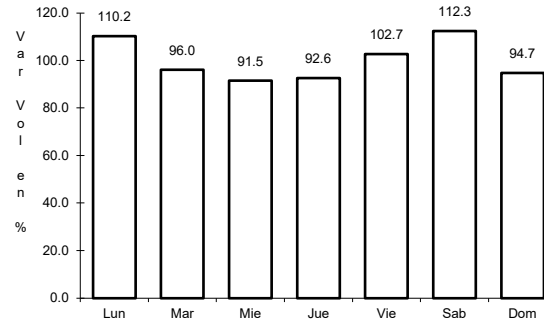
13 CARR: Ajuchitlán - Ezequiel Montes

CLAVE: 22005

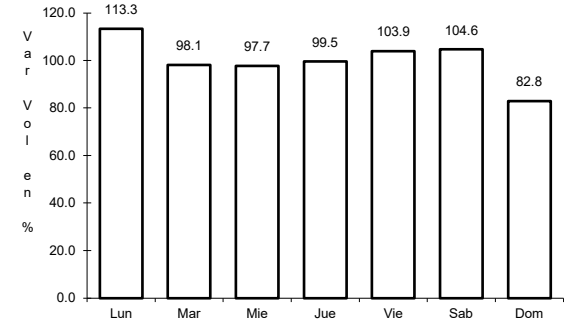
ruta: QRO-005



Km: 0.00      Tipo: 3      Sent: 1



Km: 0.00      Tipo: 3      Sent: 2

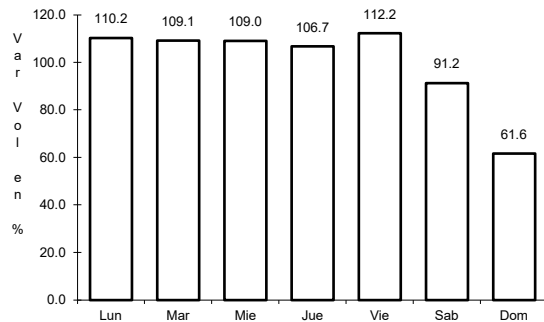


Km: 10.60      Tipo: 1      Sent: 0

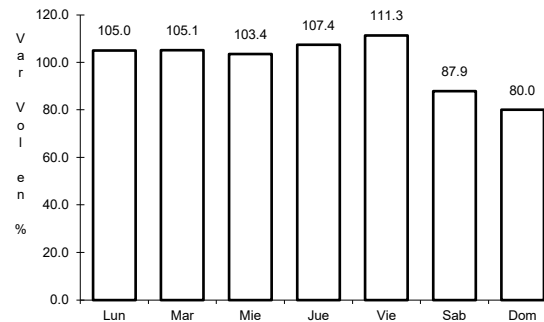
14 CARR: El Colorado - Higuierillas

CLAVE: 22004

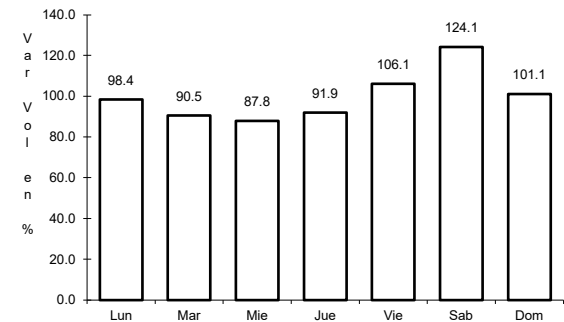
ruta: QRO-004



Km: 0.00      Tipo: 3      Sent: 1



Km: 0.00      Tipo: 3      Sent: 2

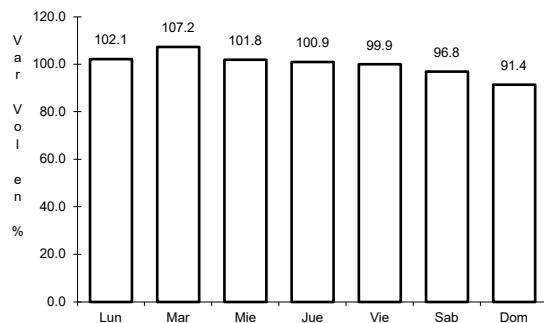


Km: 81.90      Tipo: 1      Sent: 0

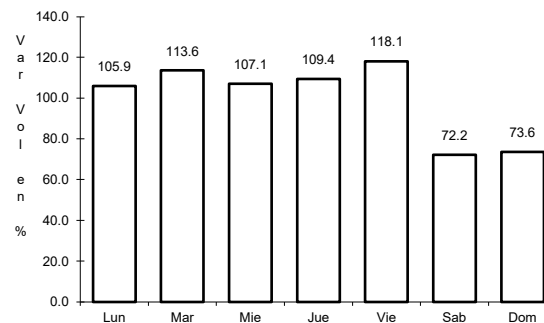
15 CARR: Hacienda Paraíso - Chichimequillas

CLAVE: 22001

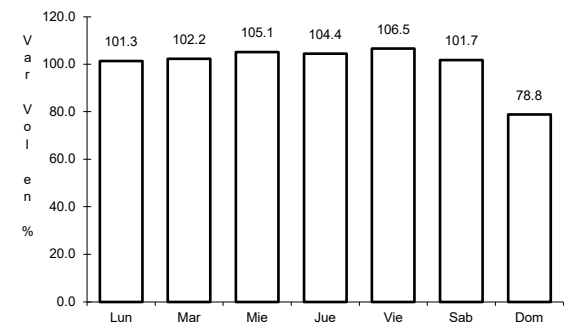
ruta: QRO-001



Km: 0.00      Tipo: 3      Sent: 1



Km: 0.00      Tipo: 3      Sent: 2

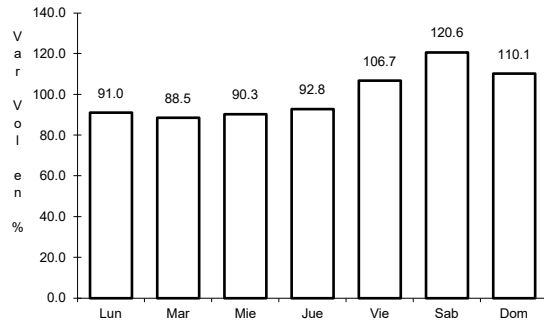


Km: 15.45      Tipo: 3      Sent: 0

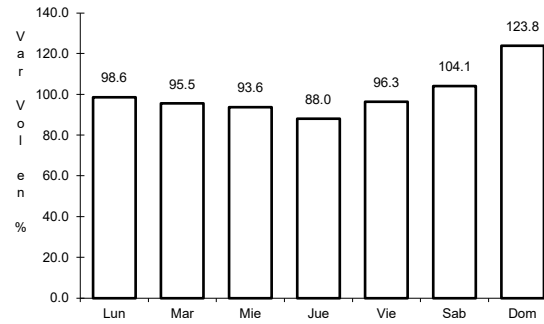
16 CARR: Huimilpan - El Lindero

CLAVE: 00155

ruta: QRO-GTO



Km: 2.60      Tipo: 1      Sent: 0

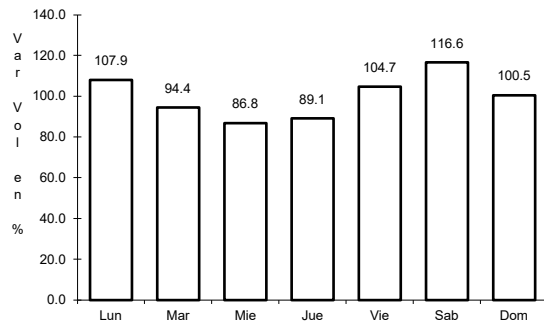


Km: 2.60      Tipo: 3      Sent: 0

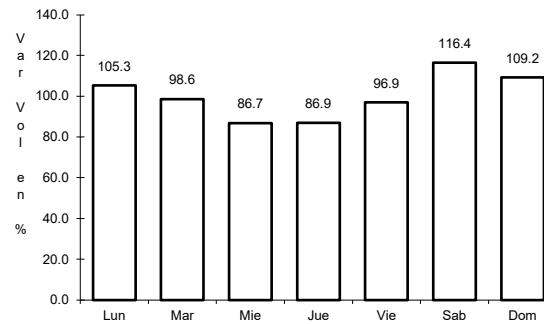
17 CARR: La Culata - San Joaquín

CLAVE: 22021

ruta: QRO-021



Km: 0.00      Tipo: 3      Sent: 0

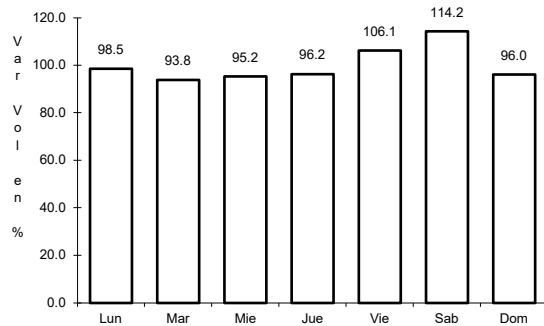


Km: 31.80      Tipo: 1      Sent: 0

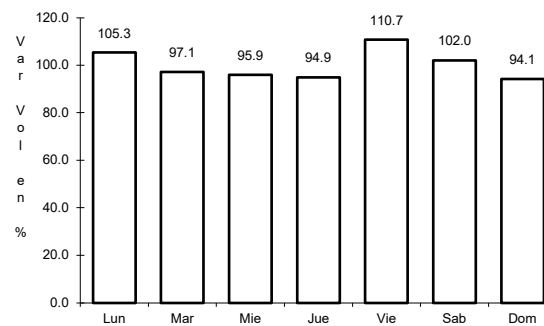
18 CARR: Libramiento de San Juan del Río

CLAVE: 22266

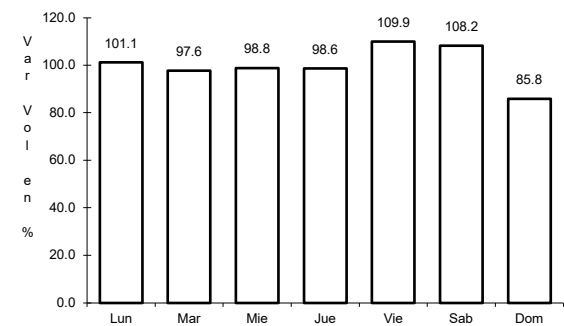
ruta: QRO



Km: 0.00      Tipo: 3      Sent: 1



Km: 0.00      Tipo: 3      Sent: 2

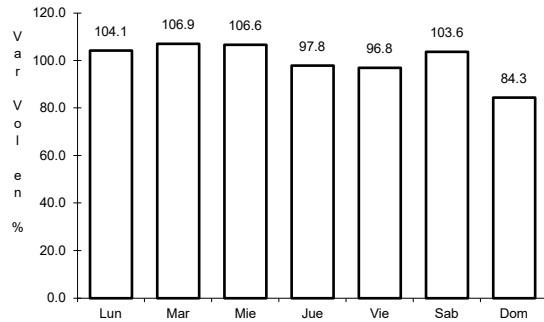


Km: 5.05      Tipo: 1      Sent: 1

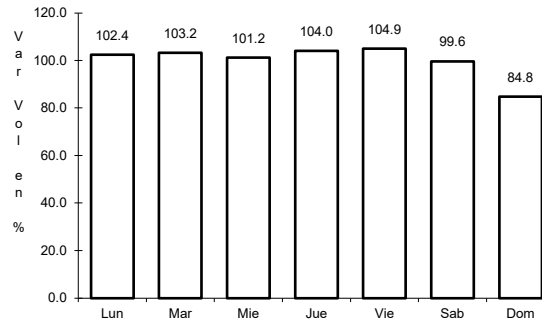
19 CARR: Libramiento Norte de Querétaro

CLAVE: 22500

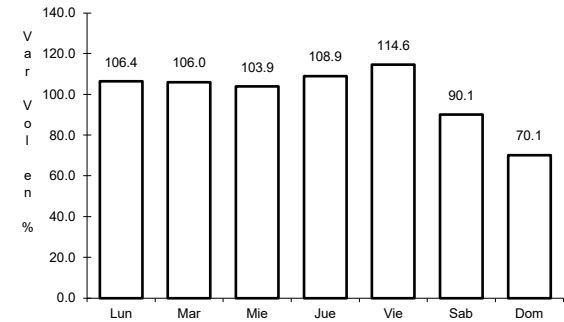
RUTA: QRO



Km: 0.00                      Tipo: 3                      Sent: 1



Km: 0.00                      Tipo: 3                      Sent: 2

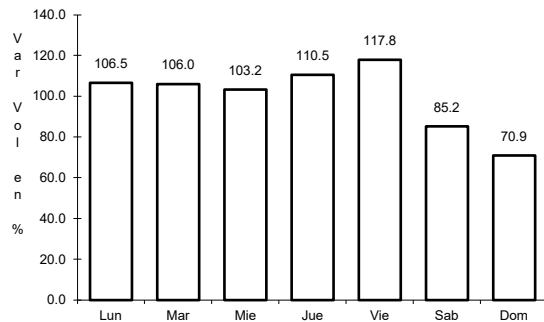


Km: 8.00                      Tipo: 3                      Sent: 1

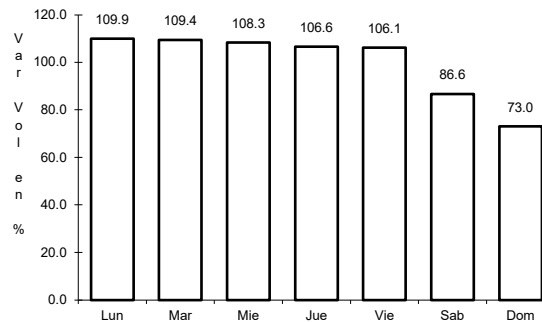
20 CARR: Libramiento Surponiente de Querétaro

CLAVE: 22501

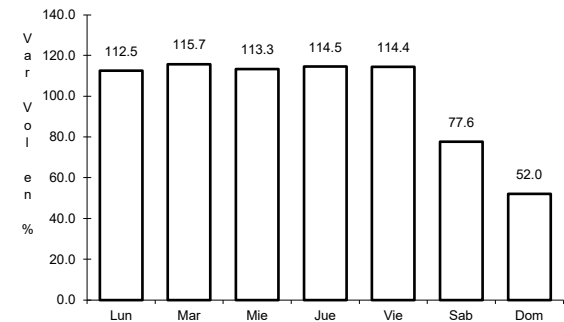
RUTA: QRO



Km: 0.00                      Tipo: 3                      Sent: 1



Km: 0.00                      Tipo: 3                      Sent: 2

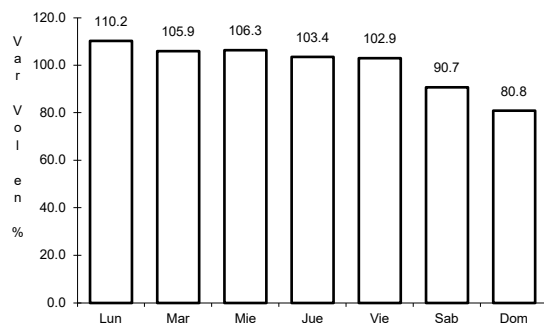


Km: 44.10                      Tipo: 3                      Sent: 1

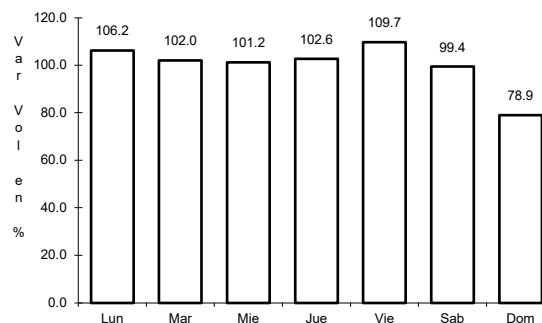
21 CARR: Peña Colorada - El Rodeo

CLAVE: 22002

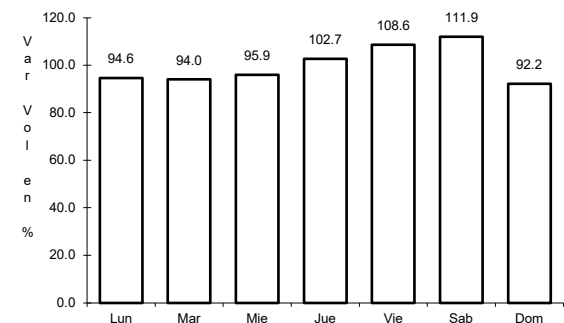
RUTA: QRO



Km: 0.00                      Tipo: 3                      Sent: 1



Km: 0.00                      Tipo: 3                      Sent: 2

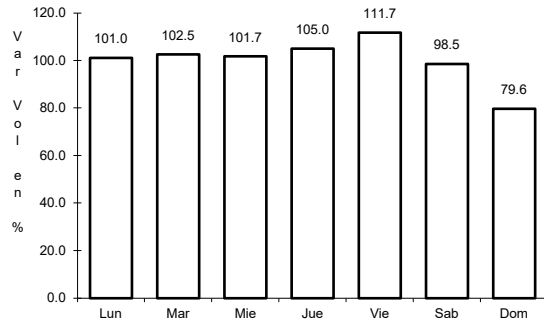


Km: 11.00                      Tipo: 1                      Sent: 0

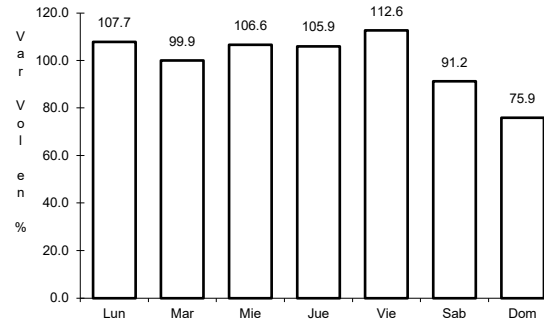
22 CARR: Querétaro - Ent. San Martín

CLAVE: 22067

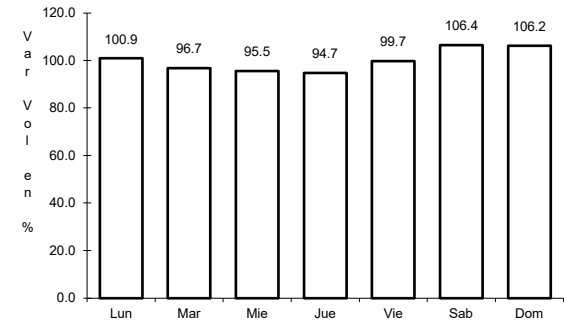
ruta: QRO



Km: 0.00      Tipo: 3      Sent: 1



Km: 0.00      Tipo: 3      Sent: 2

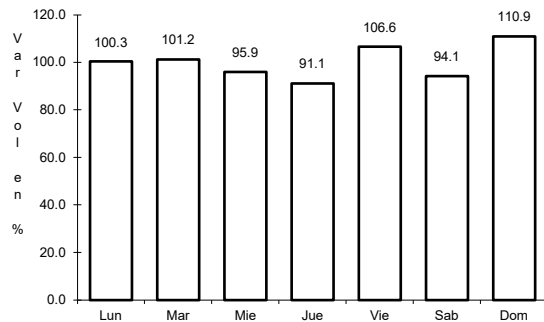


Km: 53.00      Tipo: 1      Sent: 0

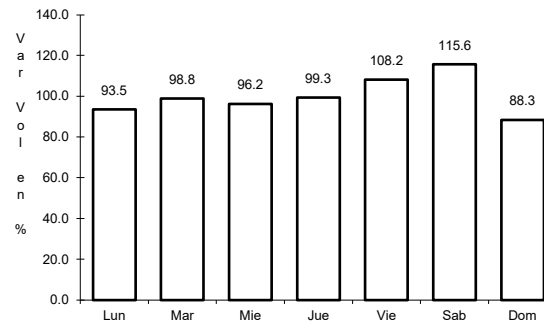
23 CARR: Querétaro - Estación Chichimequillas

CLAVE: 22270

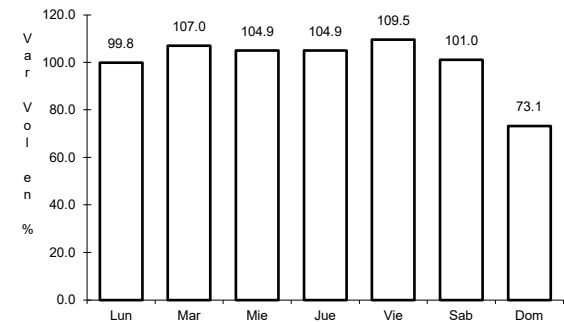
ruta: QRO



Km: 0.00      Tipo: 3      Sent: 1



Km: 0.00      Tipo: 3      Sent: 2

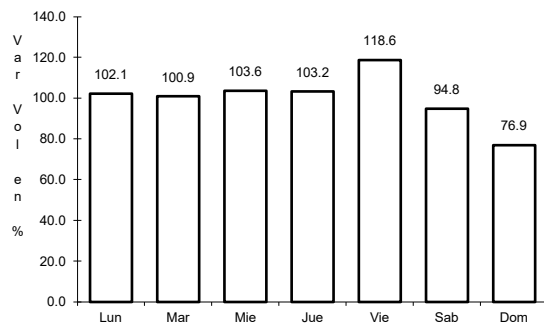


Km: 18.00      Tipo: 1      Sent: 1

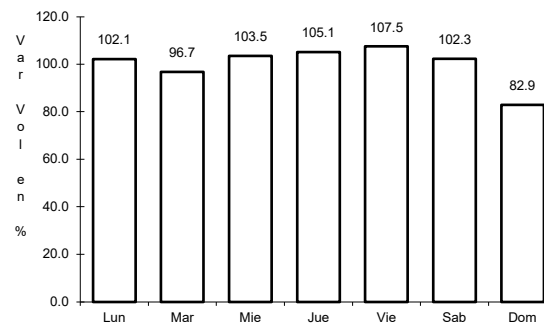
24 CARR: Querétaro - Tequisquiapan

CLAVE: 22502

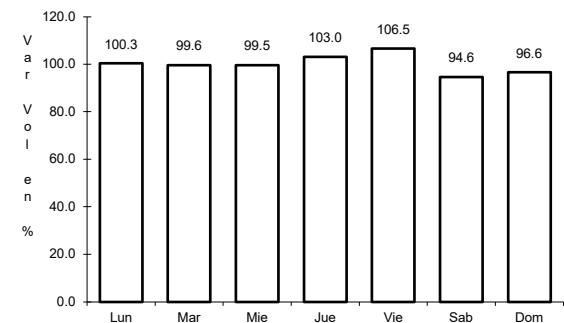
ruta: QRO



Km: 0.00      Tipo: 3      Sent: 1



Km: 0.00      Tipo: 3      Sent: 2

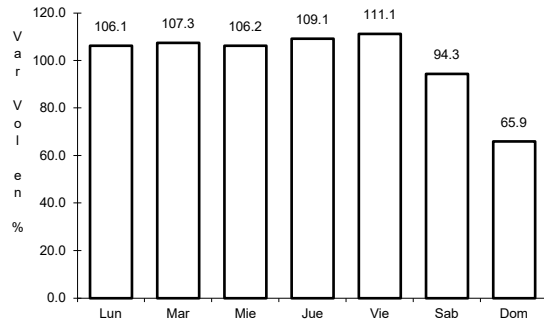


Km: 57.40      Tipo: 1      Sent: 0

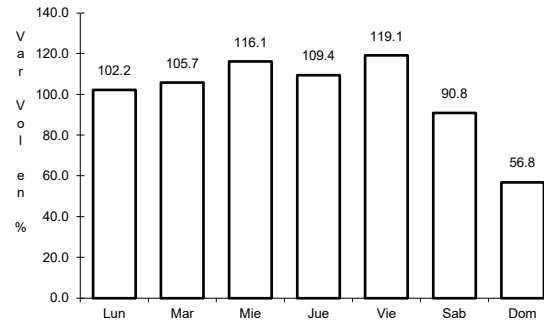
25 CARR: Querétaro - Tlacote El Bajo

CLAVE: 22069

RUTA: QRO



Km: 0.00                      Tipo: 3                      Sent: 1

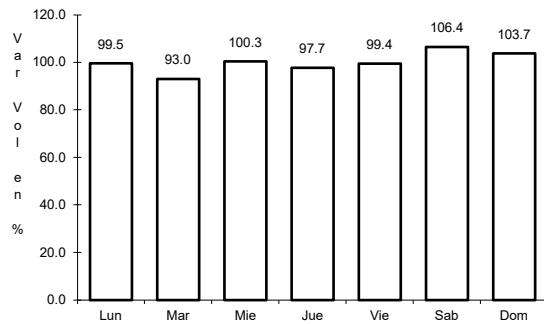


Km: 0.00                      Tipo: 3                      Sent: 2

26 CARR: Ramal a La Estancia

CLAVE: 22504

RUTA: QRO

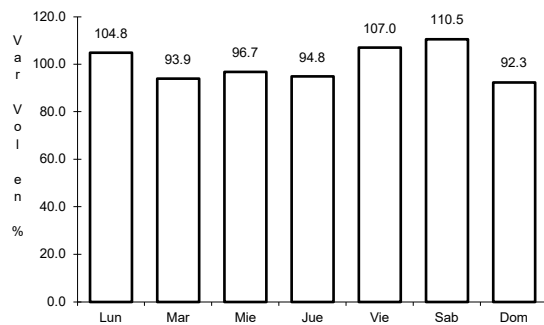


Km: 0.00                      Tipo: 3                      Sent: 0

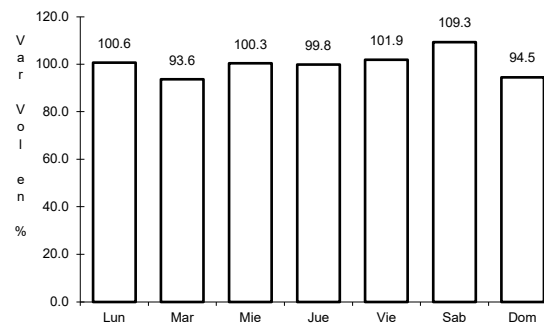
27 CARR: Ramal a Tolimán

CLAVE: 22265

RUTA: QRO



Km: 0.00                      Tipo: 3                      Sent: 0

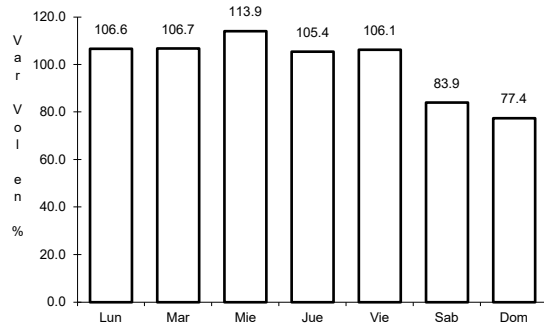


Km: 7.00                      Tipo: 1                      Sent: 0

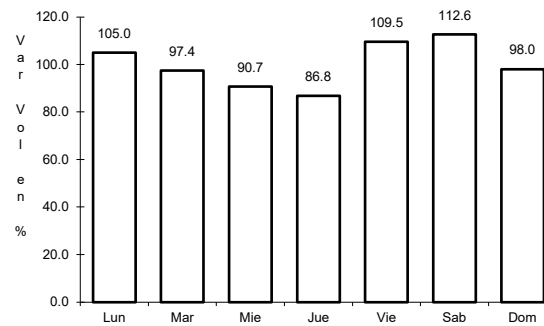
28 CARR: Rayón - Arroyo Seco

CLAVE: 24008

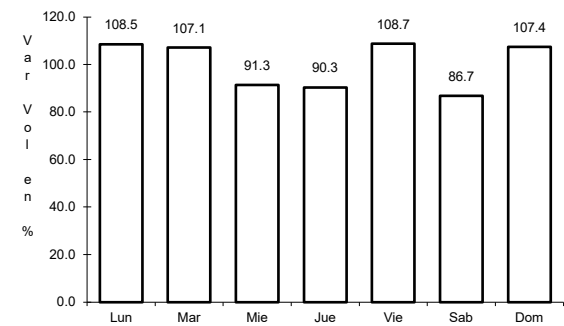
ruta: SLP-011



Km: 0.00                      Tipo: 3                      Sent: 0



Km: 36.00                      Tipo: 1                      Sent: 0

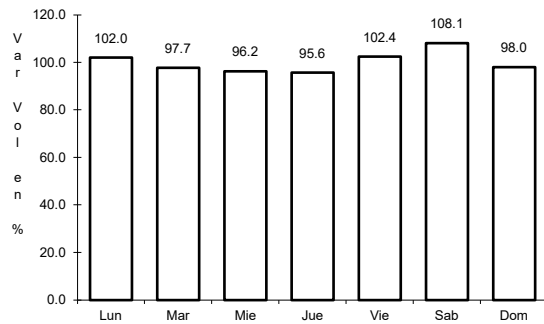


Km: 57.00                      Tipo: 1                      Sent: 0

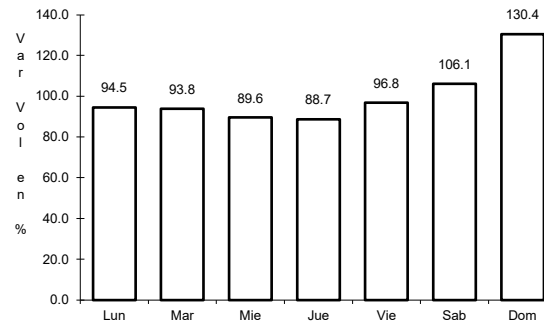
29 CARR: San Juan del Río - Amealco

CLAVE: 22011

ruta: QRO



Km: 0.00                      Tipo: 3                      Sent: 0

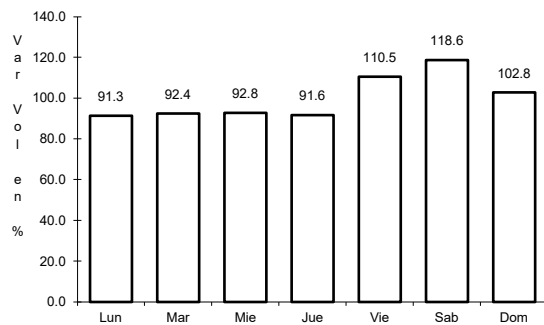


Km: 28.00                      Tipo: 1                      Sent: 0

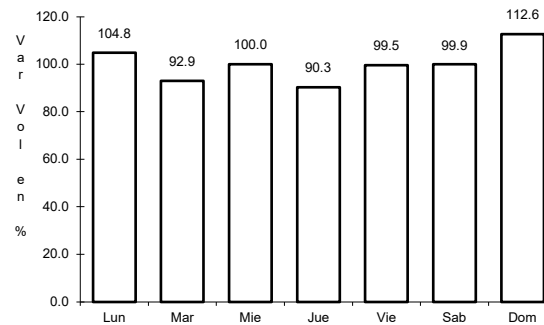
30 CARR: T. C. (Villa del Pueblito - Huimilpan) - La Sabanilla

CLAVE: 00155

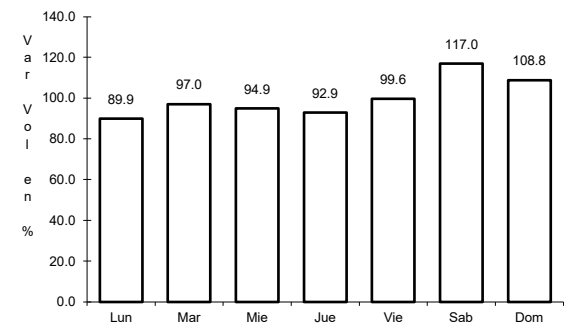
ruta: QRO-GTO



Km: 0.00                      Tipo: 3                      Sent: 1



Km: 0.00                      Tipo: 3                      Sent: 2

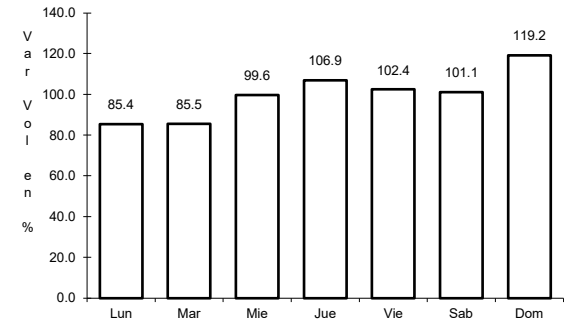
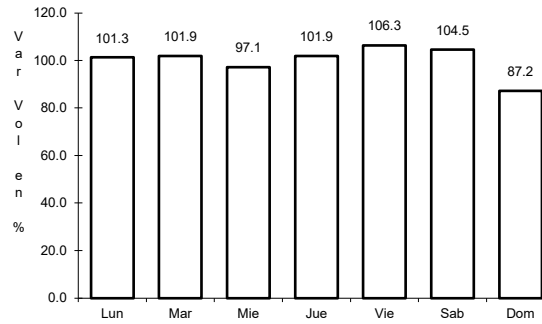
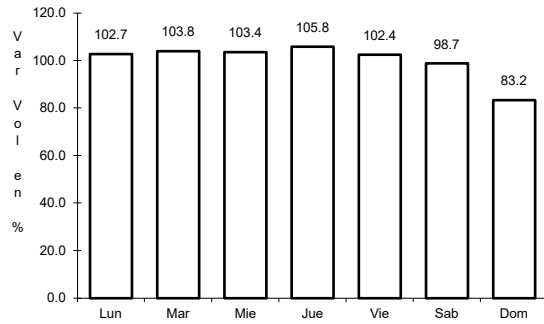


Km: 7.00                      Tipo: 3                      Sent: 1

31 CARR: Villa del Pueblito - Huimilpan

CLAVE: 22503

ruta: QRO



Km: 0.00                      Tipo: 3                      Sent: 1

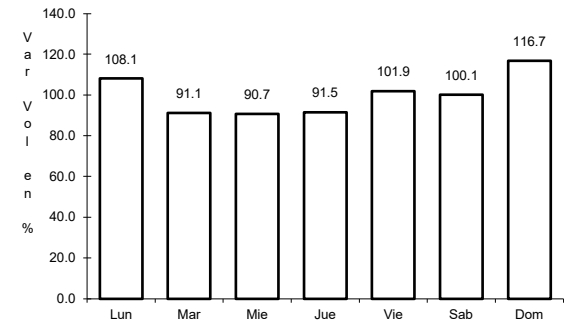
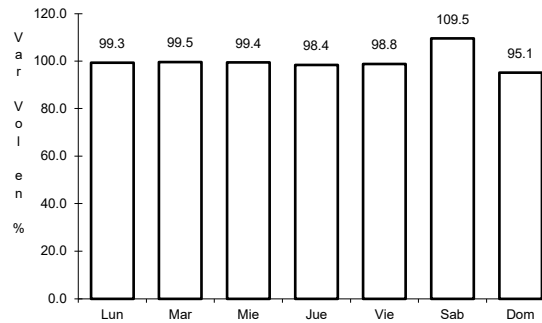
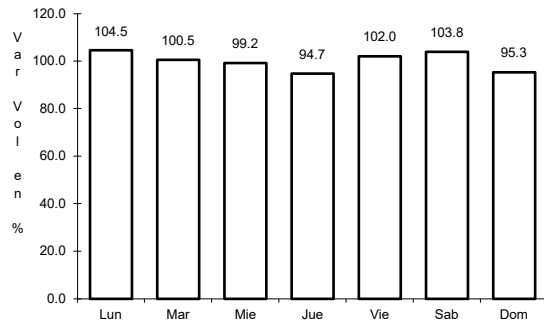
Km: 0.00                      Tipo: 3                      Sent: 2

Km: 27.00                      Tipo: 1                      Sent: 0

32 CARR: Toluca - Palmillas

CLAVE: 00496

ruta: EM(D)-MEX-055



Km: 14.21                      Tipo: 1                      Sent: 1

Km: 14.21                      Tipo: 1                      Sent: 2

Km: 85.64                      Tipo: 3                      Sent: 0

